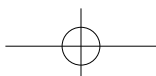
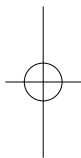
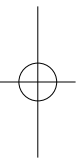
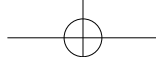


# BPBIO750

## User's Manual





## Please note the important information below before reading this manual.

### **Warning**

Failure to observe these precautions can result in personal injury or equipment damage.

### **Caution**

Failure to comply with safety precautions can damage the equipment.

### **Note**

Referring to notes can help improve equipment use.

---

## InBody

For any problems with BPBIO750 or any clinical questions, please contact us at the following:

### **InBody Co., Ltd. [HEAD OFFICE]**

InBody Bldg., 625, Eonju-ro, Gangnam-gu, Seoul 06106 KOREA

TEL: +82-2-501-3939 FAX: +82-2-578-2716

Website: <https://www.inbody.com>

E-mail: [info@inbody.com](mailto:info@inbody.com)

Reproduction, adaptation, or translation of this manual is prohibited without prior written consent from InBody Co., Ltd. under the copyright laws. This user manual may be printed incorrectly and subject to change without notice. InBody Co., Ltd. shall not be liable for any errors, incidental, or consequential damages that occurred by not complying with the content of the User's Manual.

Visit our website (<http://www.inbody.com>) to view and download further information about the functions of the BPBIO750, the explanation of results output, and more. InBody Co., Ltd. reserves the right to modify the appearance, specifications, etc. of this product to improve the quality of the product, without prior notice for reasons of performance improvement.

---

## Representative & Sponsor Information

### **InBody Europe B.V.**

Hessenbergweg 75A 1101CX, Amsterdam-Zuidoost, The Netherlands

TEL: +31-20-2386080 Website: <https://nl.inbody.com> E-mail: [info.eu@inbody.com](mailto:info.eu@inbody.com)

### **Australian Sponsor. [AUSTRALIA]**

Emergo AUSTRALIA. Level 20, Tower II, Darling Park, 201 Sussex Street, Sydney, NSW 2000, AUSTRALIA

TEL: +61-2-9006-1662 FAX: +61-2-9006-1010 Website: <https://www.emergogroup.com> E-mail: [Sponsor@emergogroup.com](mailto:Sponsor@emergogroup.com)

## Customer Service Information

### **InBody [USA]**

13850 Cerritos Corporate Dr., Unit C, Cerritos, CA 90703, USA

TEL: +1-323-932-6503 FAX: +1-323-952-5009 Website: <https://www.inbody.com> E-mail: [contact@inbody.com](mailto:contact@inbody.com)

### **InBody Japan Inc. [JAPAN]**

Tani Bldg., 1-28-6, Kameido, Koto-ku, Tokyo 136-0071 JAPAN

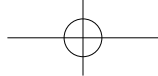
TEL: +81-3-5875-5780 FAX: +81-3-5875-5781 Website: <https://www.inbody.co.jp> E-mail: [inbody@inbody.co.jp](mailto:inbody@inbody.co.jp)

### **InBody China. [CHINA]**

904, Xing Di Plaza, No. 1698 Yishan Road, Shanghai, 201103, CHINA

TEL: +86-21-64439738, 9739, 9705 FAX: +86-21-64439706 Website: <https://www.inbody.com> E-mail: [info@biospacechina.com](mailto:info@biospacechina.com)

©2019 InBody Co., Ltd. All rights reserved. BM-ENG-H2-A-190522



## Basic points

### A. Product Components

The blood pressure monitor is a medical device for measuring blood pressure.

### B. User

This blood pressure monitor must be used with medical professionals.

### C. Measuring person

Adult / Children (more than 7 years old) with arm circumference 17cm ~42cm

#### Caution

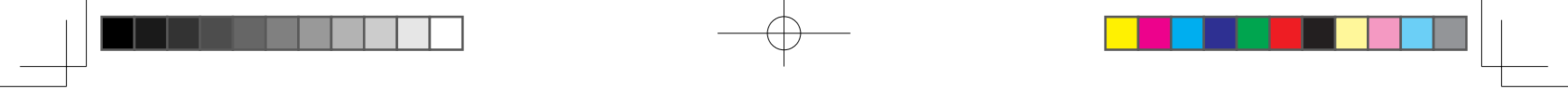
Check that the patient has the following symptoms before using the blood pressure monitor.

- Check that blood circulation is abnormal and check that blood pressure or body temperature is significantly off (at the measurement location, it may be less blood flow).
- Check that the patients use an artificial heart and lungs (the pulse is not detected.).
- Check that the oxygen saturation concentration sensor and a blood pressure monitor cuff is attached to the same arm.
- Check that the patient has aortic disease.
- Check that the patient has frequent arrhythmia.
- Check that the patient has convulsions, tremors or arterial pulse. (heart massage, continuous vibration per every 1 minute, rheumatic disease etc.)

Patients with other diseases, use the equipment after consulting experts.

### D. Operating environment

The equipment was primarily intended for use in hospitals, clinics.





# BPBIO750

## User's Manual Contents

### I. Installing BPBIO750

A. Product Components	4
B. Operating Environment	5
C. Installation	5
D. Loading and Reloading Printer Paper	8
E. Replacing Cuff Cloth	9
F. Setup	11
G. Precautions for Maintenance	14

### II. Blood Pressure Test

A. Precautions for Measurement	15
B. Test Instructions	15
C. Test Posture	18

### III. Transportation and Storage

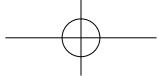
A. Cautions during Transportation	19
B. Repacking Instructions	20
C. Transportation and Storage Environment	20

### IV. FAQ

A. Error Code	21
B. Regarding the Equipment	21
C. Regarding the Test	23

### V. Others

A. Exterior and Functions	25
B. Safety Information	26
C. Product Classification	27
D. Specifications	28



# I. Installing BPBIO750

## A. Product Components

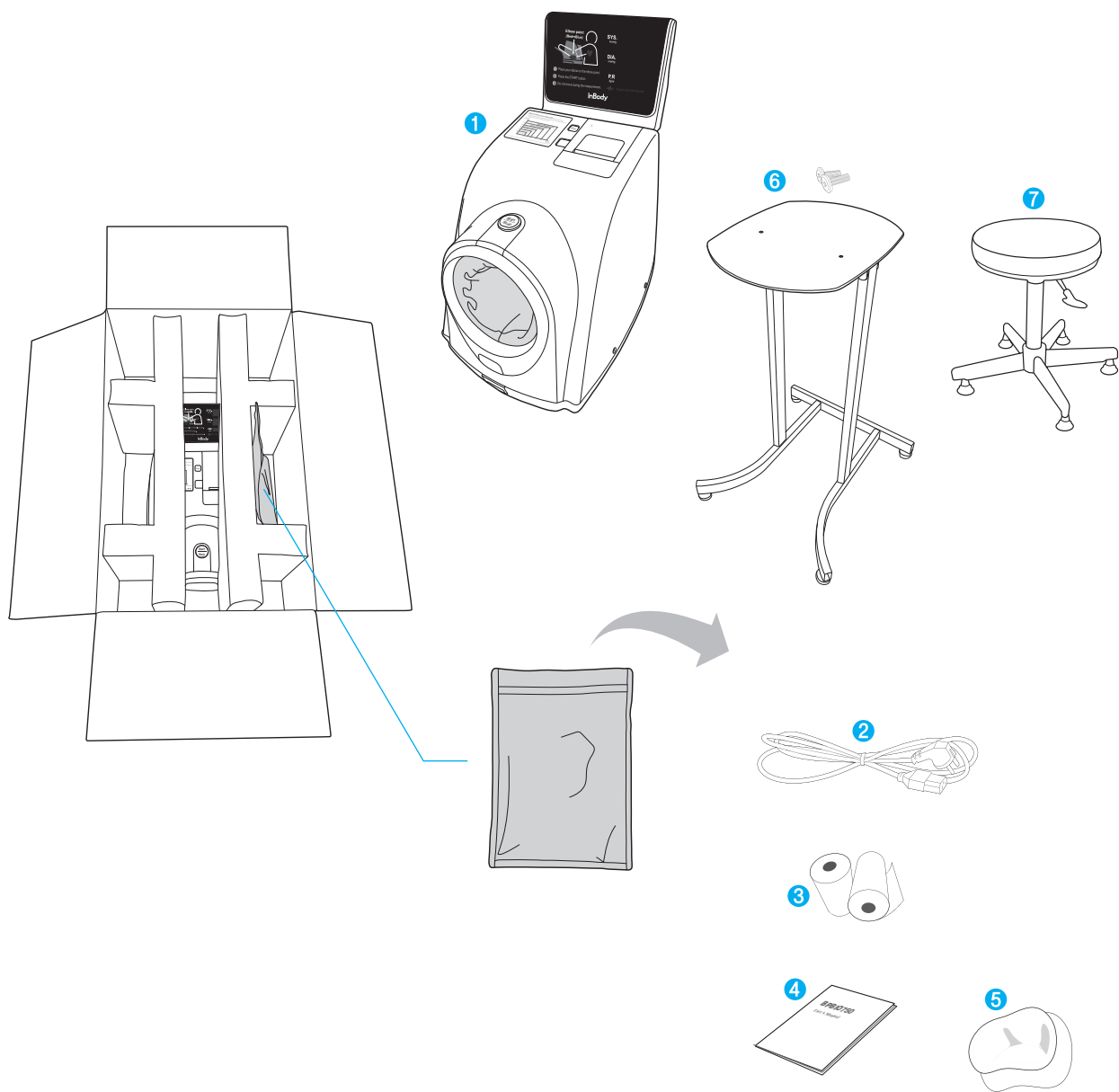
BPBIO750 consists of the following components. Make sure all of the following components are present.  
check each component of the system for damage prior to installation.

### Basic Components

- ① BPBIO750
- ② Power cable (AC 250V 10A 1.8m) 1 EA
- ③ Two rolls of printing paper
- ④ User's Manual
- ⑤ Two pieces of cuff cloth (One fitted)

### Optional Components

- ⑥ Desk for BPBIO750, fixing screw 2 EA
- ⑦ Chair for BPBIO750



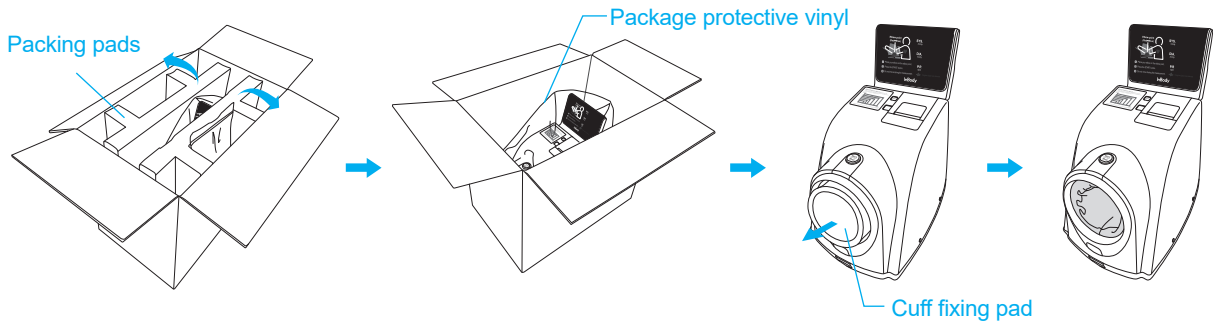
## B. Installation Environment

Please make sure of the proper environment before BPBIO750 installation. This equipment is suitable for indoor use. If installing the equipment outdoors, the following requirements must be fulfilled.

Temperatures range	10 to 40°C (50 to 104°F)
Relative humidity	30 to 75% RH
Atmospheric pressure range	70 to 106 kPa

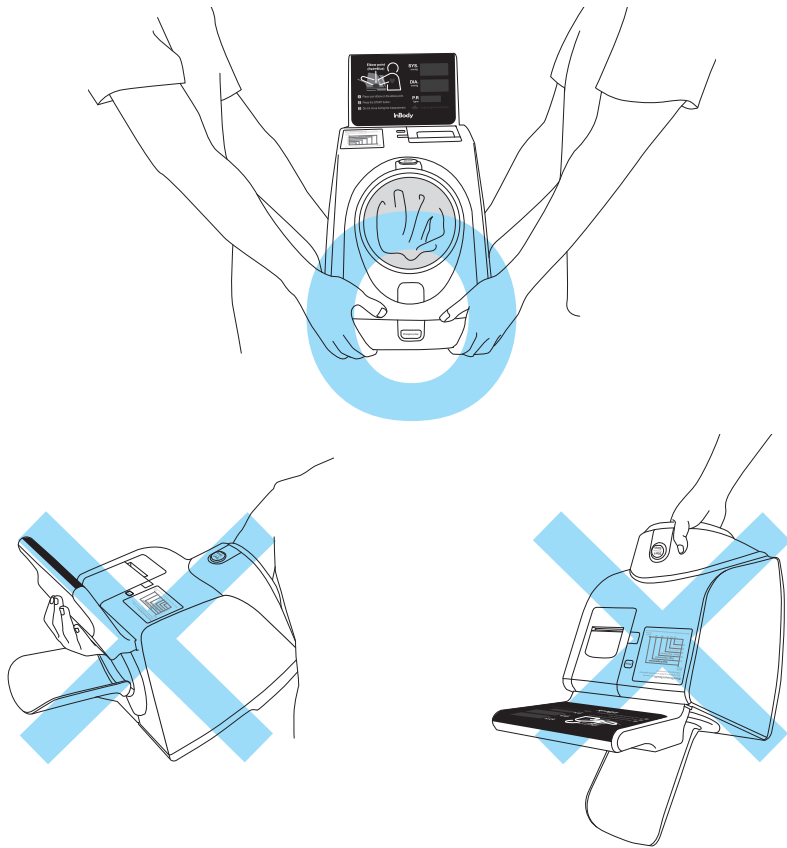
## C. Installation

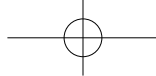
1. Unpack the BPBIO750 package and remove the packing pads. Take off the package protective vinyl and package out of BPBIO750, and remove the cuff fixing pad.



### ! Caution

- Do not carry the equipment by holding the cuff.
- Keep packing material to repack the BPBIO750 at a later time. Dispose of trash according to local laws and regulations.
- Refer to the figure below when transporting the BPBIO750.

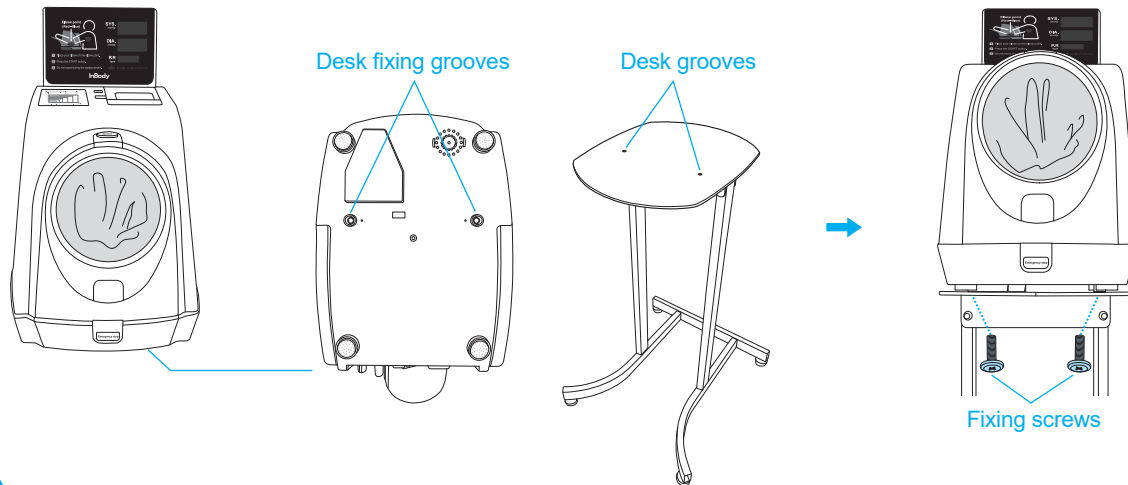




2. Place the equipment on a solid table that can withstand the weight of BPBIO750 (approx. 7.1kg).

If dedicated desk for BPBIO750 is available, align the desk-fixing grooves on the bottom of BPBIO750 and the grooves on the desk and secure them with two fixing screws.

\*Dedicated desk for BPBIO750 is sold separately.

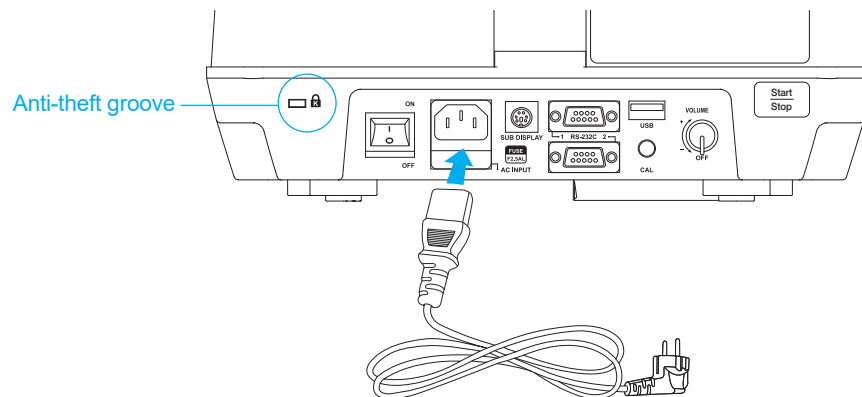


### **Caution**

- Install BPBIO750 on the floor where is flat and vibration free.

If the equipment is installed where the floor is not flat, it may topple during a test or the test results may be inaccurate.

3. Connect the power cable provided with BPBIO750.

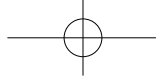


### **Warning**

- Do not install the equipment where the power cable is difficult to disconnect.
- Do not plug or disconnect the power cable with wet hands. There is a risk of electric shock.
- Always use an outlet supplied to the right power supply (AC100-240 V). An incorrect power supply may cause fire or malfunctions.
- When using a multiple tab, use it having enough power capacity.
- Do not disassemble the equipment arbitrarily. This may cause electric shock, injury, product malfunction, and/ or inaccurate results. Unauthorized disassembly will void the manufacturer's warranty.
- Do not let the BPBIO750 touch with other electronic devices when on. This may cause electric shock.

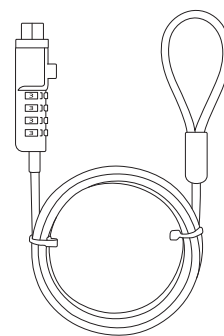
### **Caution**

- Plugging the device into an ungrounded outlet may cause malfunction, electric shock, and/ or inaccurate results.

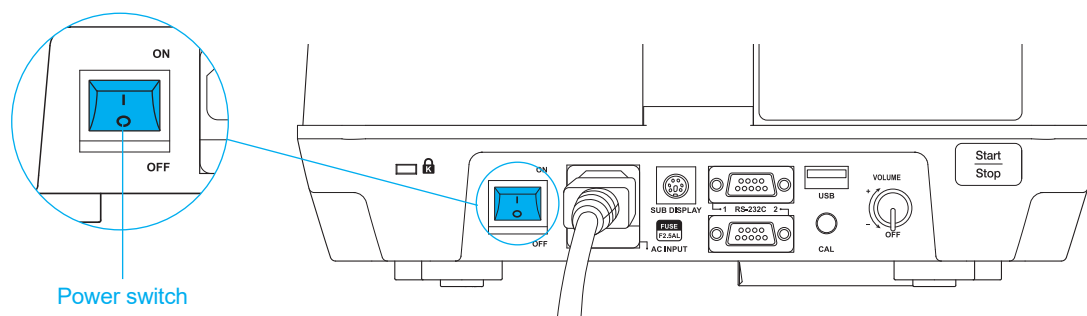


#### 4. Use the anti-theft groove to prevent theft.

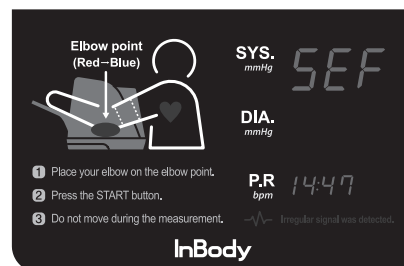
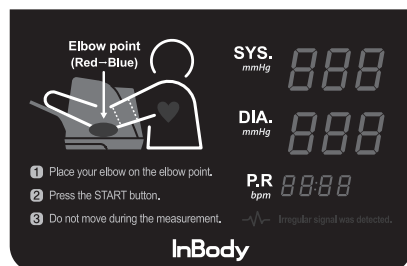
- \* Theft protection cable is sold separately.
- \* Use the anti-theft cable which is used for laptop etc.



#### 5. Turn the BPBIO750 on by pressing the power switch located on the back of the device.



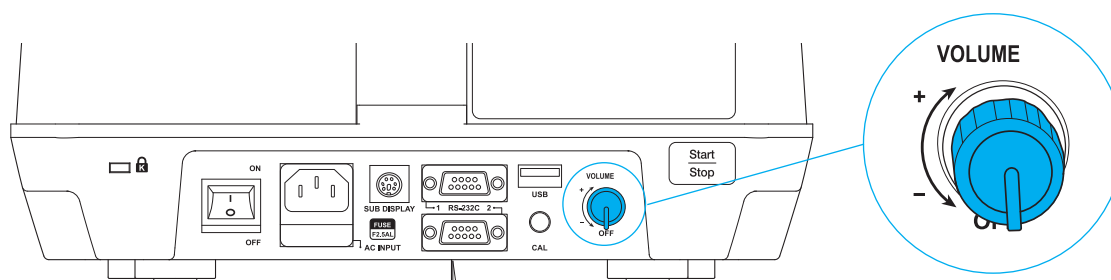
#### 6. When BPBIO750 is turned on, the following screen is displayed and a self-test is automatically performed.

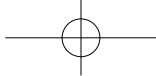


#### Caution

- Do not operate or touch the device while it is self-testing (about 10 seconds).  
It may cause errors or the inaccurate test results.

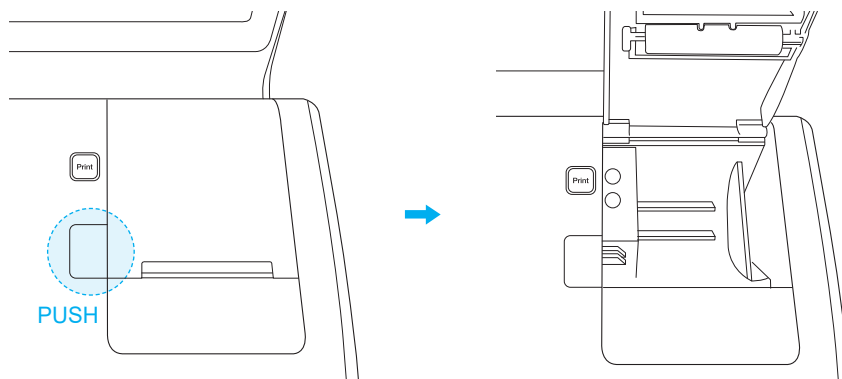
#### 7. Adjust the sound volume by turning the volume knob on the rear of BPBIO750.



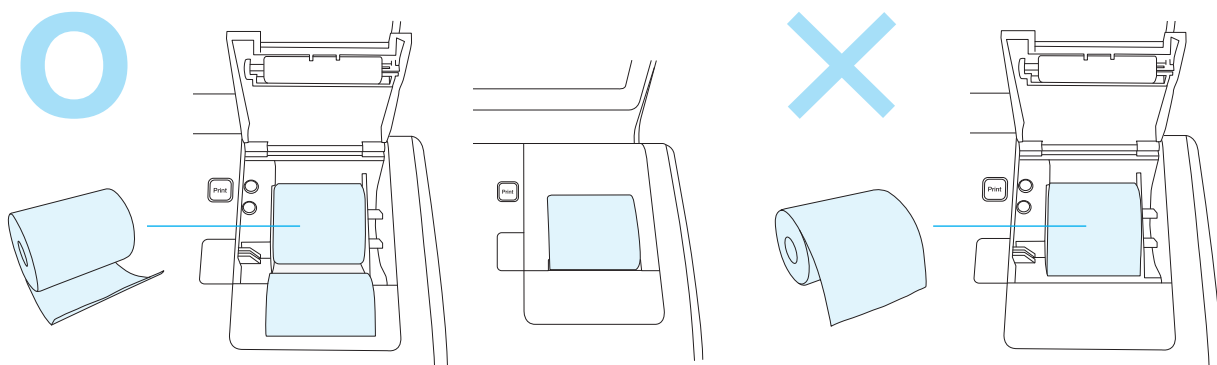


## D. Loading and Reloading Printer Paper

1. Press the button below the Print button to open printer cover.



2. Check the orientation of the paper as shown below before inserting the paper inside the printer cover.  
After inserting the printer paper, let a certain amount of paper come out of the cover, and close the cover.

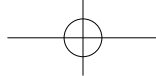


### ⚠ Caution

- The printer will not work if the paper is inserted incorrectly.
- Remove all trash from previous printer paper rolls.

### ⚠ Note

- Two rolls of printer paper are provided with the BPBIO750.
- If additional printer paper is necessary, the user must purchase it separately as a consumable item.
- The user can purchase printer papers at [www.inbodymall.com](http://www.inbodymall.com).

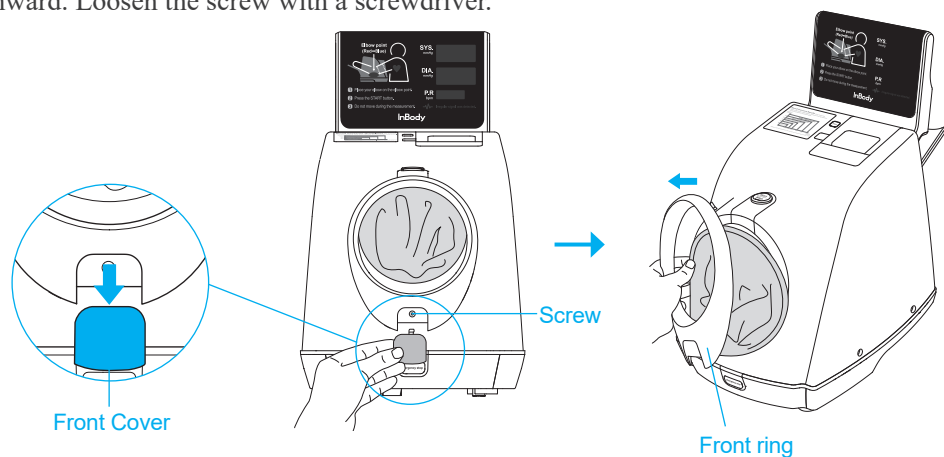


## E. Replacing Cuff Cover

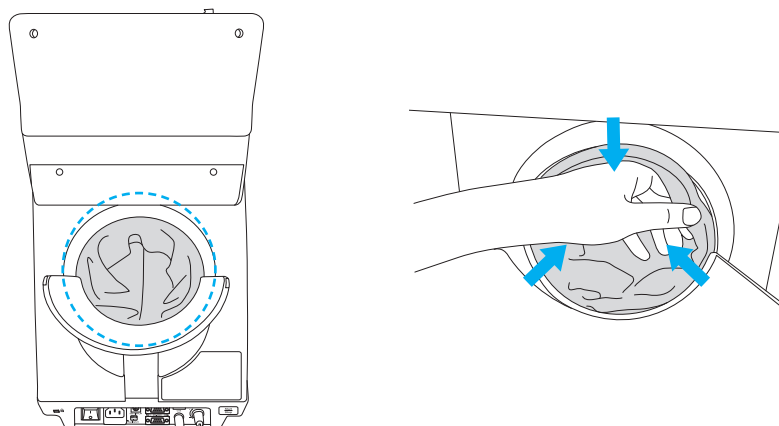
The cuff cover of the BPBIO750 should be replaced periodically for sanitary purposes.

Follow the guide below to replace the cuff cover

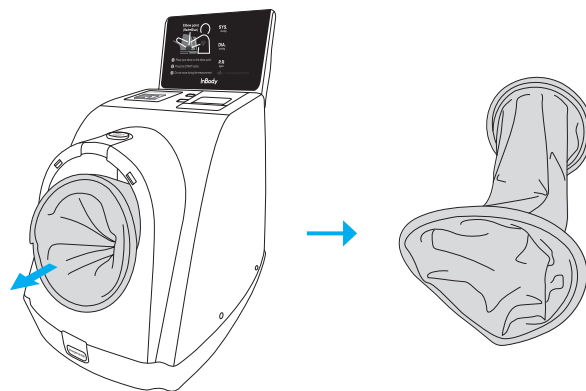
1. Turn BPBIO750 off before replacing cuff cover. Remove the front cover of the BPBIO750 by pushing downward. Loosen the screw with a screwdriver.

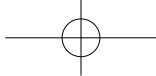


2. Separate the cuff cover attached to the back of the arm insertion section by pulling it inward.

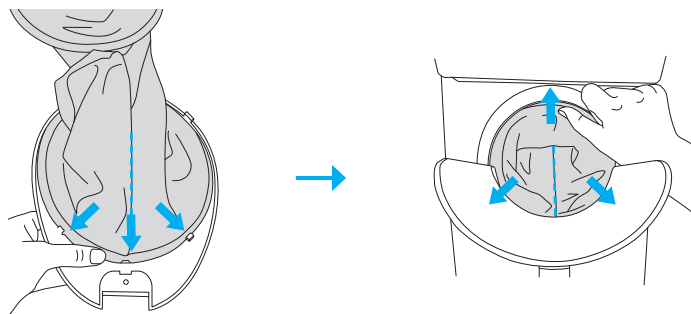


3. Pull the cuff cover on the front of the arm insert to remove it.





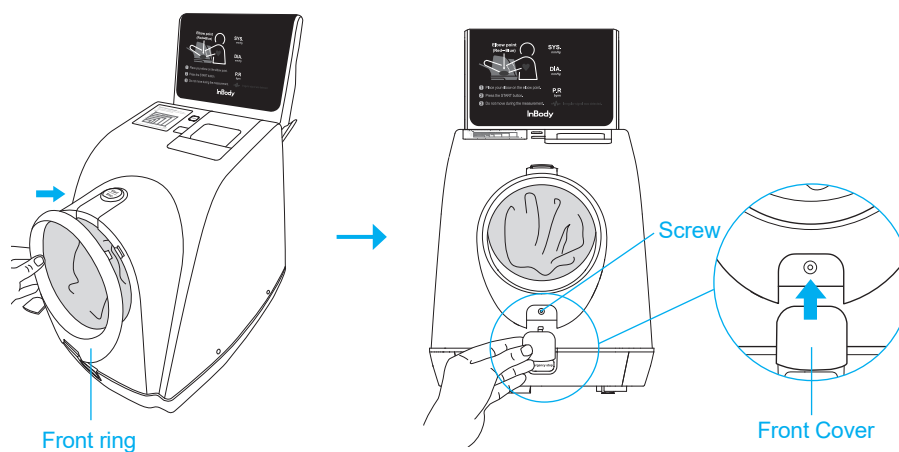
4. Place the seam of the new cuff cover down as shown, attach the new cuff to the back of the front ring and the rear arm insertion section by pushing the border of it.



**! Caution**

- Blood pressure results may be inaccurate if the seam does not face down.

5. Attach the previously removed front ring on the BPBIO750, secure it with a screw and close the front cover.



**! Note**

- Two pieces of cuff cover are provided with the BPBIO750. (One is already mounted in the equipment.)
- Additional cuff cover can be purchased separately.
- The user can purchase printer papers at [www.inbodymall.com](http://www.inbodymall.com).

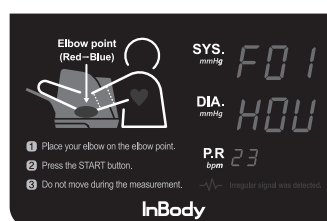
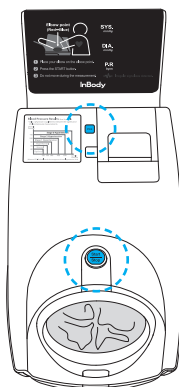


## F. Setup

Set up consists of time setting, sound setting, result sheet printing option, pressure unit setting, communications setting, result sheet printing items setting.

### 1. Setting Setup

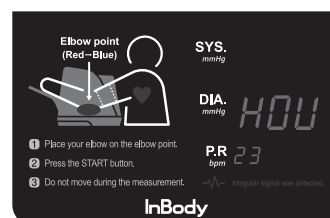
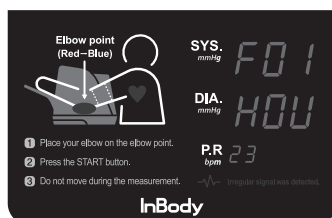
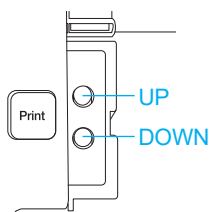
- 1) If you press and hold the Start/Stop button and the Print button at the same time for more than 2 seconds in the Home screen, then 'F01' (time setting), which is the first screen of the Setup, blinks and the currently set status are shown in the Diastolic (HOU) column and Pulse (Hour) column.



- 2) When the Systolic column is blinking, you can go to the desired setting item.

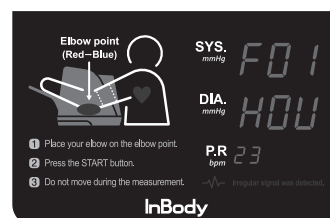
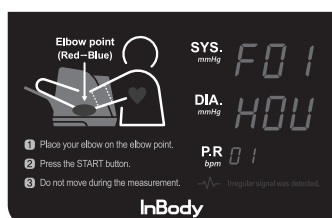
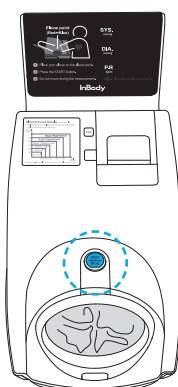
Press UP / DOWN buttons to move to the other setting items.

\* UP / DOWN buttons are located beneath the printer cover.



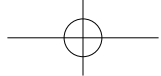
- 3) Press the Start/Stop button to change the setting value.

The set value can be changed with the UP / DOWN buttons, and the set value of the corresponding item is displayed in the Pulse column.



- 4) After completing the settings, press the Start/Stop button to save the setting value. And then you can go back to the desired setting item.

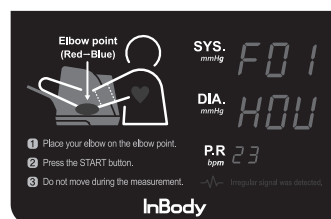
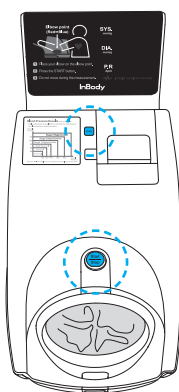
- 5) After completing all settings, press and hold the Print button for 2 seconds to return back to the Home screen.



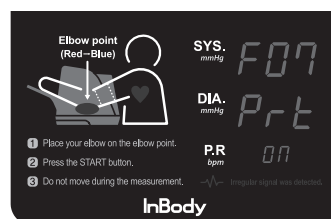
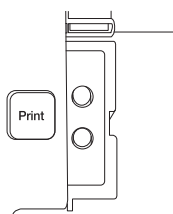
## 2. Setup Example

The following is an example of changing the output of the result sheet from automatic printing to manual printing.

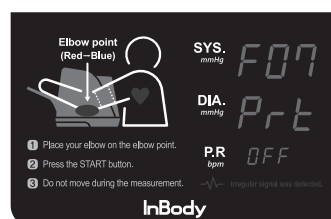
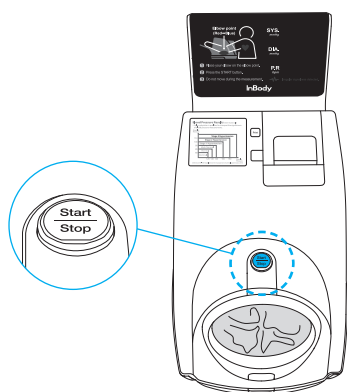
- 1) At the Home screen, press and hold Start/Stop button and Print button at the same time for more than 2 seconds. The 'F01' screen, which is the first screen of the Setup, and the currently set status are shown below.



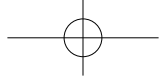
- 2) Press UP / DOWN button to go to 'Automatic Printing Options ('F07 Prt')'. In the Pulse column, the existing setting value is '00' displayed.



- 3) Press the Start/Stop button to enter the corresponding item, and then use the UP / DOWN buttons to change the current setting value from '00' to 'OFF'.



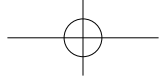
- 4) Press the Start/Stop button to save the setting value, and display will be returned to Setup screen.
- 5) Press and hold the Print button for 2 seconds. to return back to the Home screen.



### 3. Detailed description of Setup items

When in the Setup menu, the following information will be displayed in the Systolic, Diastolic, and Pulse screen.

Function		Screen			Description
		Systolic	Diastolic	Pulse	
'Hour' setting		F01	HOU	14	setting hour (0-23)
'Minute' setting		F02	MIN	15	setting minute (0-59)
'Year' setting		F03	YER	20 17	setting year (2000-2035)
'Month' setting		F04	MEH	10	setting month (1-12)
'Day' setting		F05	DAY	22	setting day (1-31)
Sound		F06	Snd	1.00C	Voice sound + Beep sound output
				2.6EP	Beep sound output
Automatic Printing Options		F07	Prt	ON	Automatic printing of result sheet
				OFF	Manual printing of result sheet
Test result screen Output time		F08	LCD	05	5 seconds
				10	10 seconds
				20	20 seconds
				30	30 seconds
				60	60 seconds
				120	120 seconds
Date output format		F09	DATE	1.Ynd	YY / MM / DD
				2.ndY	MM / DD / YY
				3.dnY	DD / MM / YY
Pressure unit		F10	Unit	1.Hg	mmHg
				2.Pa	kPa
Communication		F11	232	1.Inb	InBody
				2.PC	PC
Results sheet item	Type of Results sheet	F12	Fot	1.5nL	Three vertical lines (relatively small Results sheet) * F13-F18 function not available
				2.619	3 horizontal lines (relatively large Results sheet)
	Additional result values	F13	6oP	ON	Mean blood pressure / Pulse pressure / Pressure rate product output
				OFF	Not used
	Graph of blood pressure result	F14	GrP	ON	standard blood pressure range graph output
				OFF	Not used
	Test posture check	F15	Arrn	ON	Guide message output about the location of elbow sensor
				OFF	Not used



Results sheet item	Blood pressure information	<i>F 16</i>	<i>not</i>	<i>ON</i>	Blood pressure information on the Results sheet output
				<i>OFF</i>	Not used
	Pulse Graph	<i>F 17</i>	<i>PUL</i>	<i>ON</i>	Pulse graph on the Results sheet output
				<i>OFF</i>	Not used
	Logo	<i>F 18</i>	<i>Log</i>	<i>ON</i>	Customized logo on the Result sheets output
				<i>OFF</i>	Not used

## G. Precautions for Maintenance

### Caution

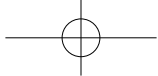
- Never move the equipment while the power is on.
- Do not let foreign objects, like dust and liquid to enter the device. Foreign objects can damage electric components.
- Clean the exterior of the device gently with a lint-free cloth once a week. Do not scratch the LED screen while cleaning the equipment.
- Replace the cuff cover when it becomes dirty or worn out.
- Packing material and other waste should be disposed of according to the laws and regulations.

Before powering on the equipment

Please check the followings before turning on the power.

- Ensure that the equipment has not been changed due to the impact.
- Make sure that the equipment is not contaminated.
- Make sure that the equipment is not wet.
- Make sure the power cord is fully connected.
- Make sure the power cord is not damaged.
- Make sure the power cord is located in a safe place to avoid falling.

BPBIO750 shall carry out a self-test to determine abnormalities in the blood pressure monitor automatically when the power is turned on; but you need to have experts inspected regularly every two years in order to maintain performance and safety. If error code shows during the self-test, please contact the place of purchase or A/S representative.



## II. Blood Pressure Test

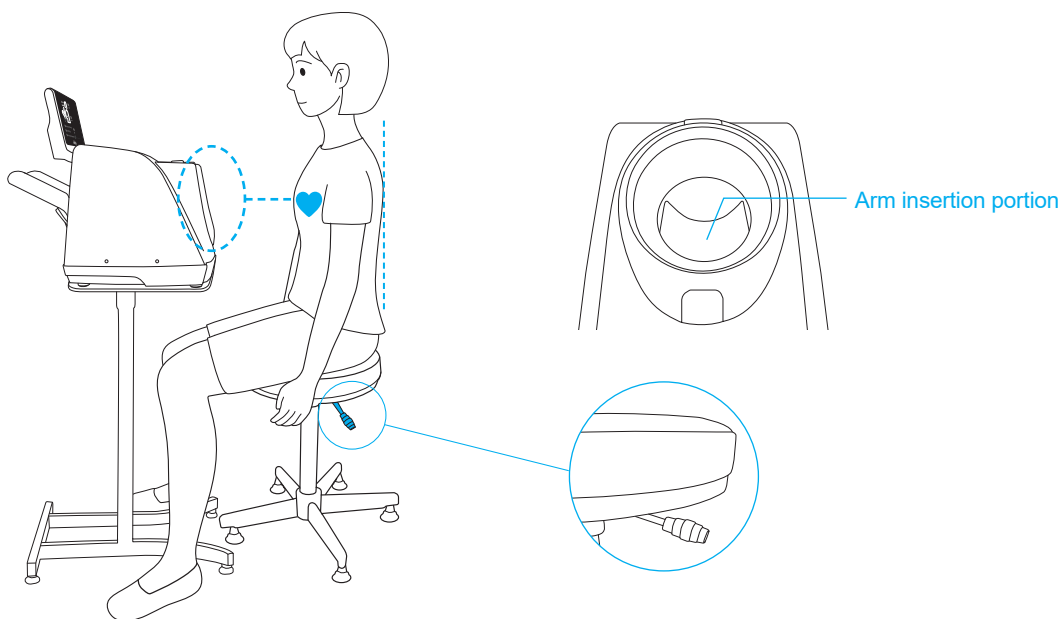
### A. Precautions for Measurement

#### Caution

- User should rest at least 5 to 10 minutes before the test.
- Do not roll up the user's sleeve, but take off thick clothes.
- User should sit up straight in the chair.
- Insert the user's arm until the elbow is caught in the elbow groove.
- Adjust the height of the chair so that the inserted upper arm and the heart are horizontal.
- Test in a relaxed state.
- User should not talk or move during the test.

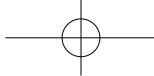
### B. Test Instructions

1. Adjust the height of the chair so that the inserted upper arm and the heart are horizontal.



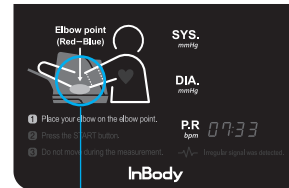
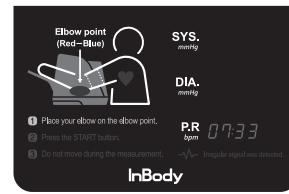
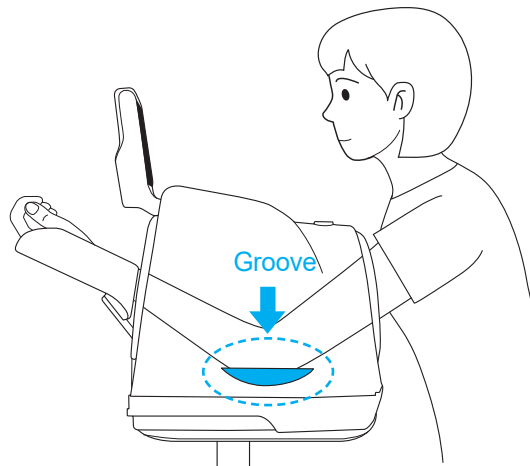
2. Rest for at least 5 minutes prior to taking the test.

\* If examined in a bit unstable condition, the test result may be incorrect, and generally it turns up higher than the your usual blood pressure.



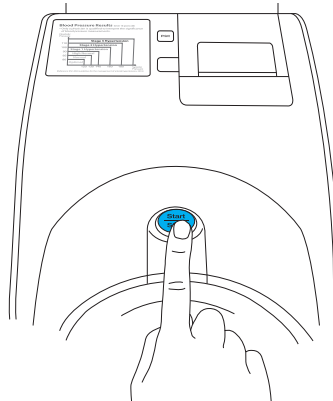
3. Insert the arm into the arm insertion portion until the elbow is caught in the groove part as shown.

\* When aligning the elbow to the groove, the blue LED lights up on the groove part of the display.



Blue LED lights.

4. Press the Start/Stop button to start the test.



5. The pressure is automatically applied to the cuff, and the blood pressure is measured.

\* Do not talk or move during the test.

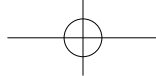
\* Relax while sitting up straight.

### Caution

- If an emergency occurs during the test, press Start/Stop button or button on the front bottom of the BPBIO750. The cuff will release automatically.



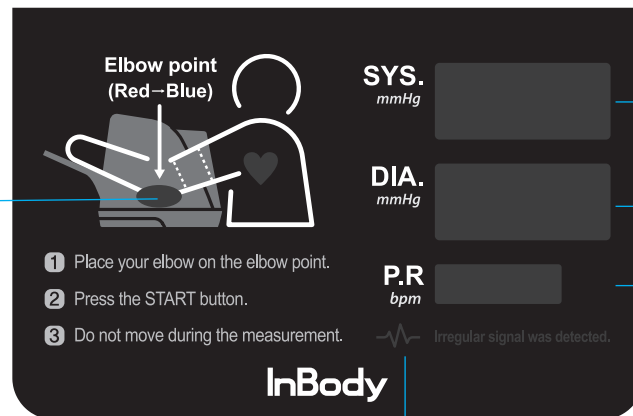
Emergency stop button



6. The cuff is automatically released after completing the test. Wait for the cuff to fully loosen and pull out your arm.

7. Check the results on the screen.

\* Voice message and Results sheet come out depending on Setup.



Systolic blood pressure

Diastolic blood pressure

Pulse rate

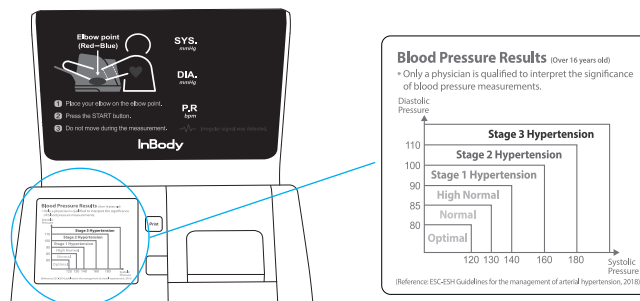
· If the test is not completed normally due to a motion etc.  
· When irregular pulse waves are detected

Elbow position LED

· Blue: If the position of the arm for the test is normal  
· Red: If you put your arm in too deeply or put in less and complete the test

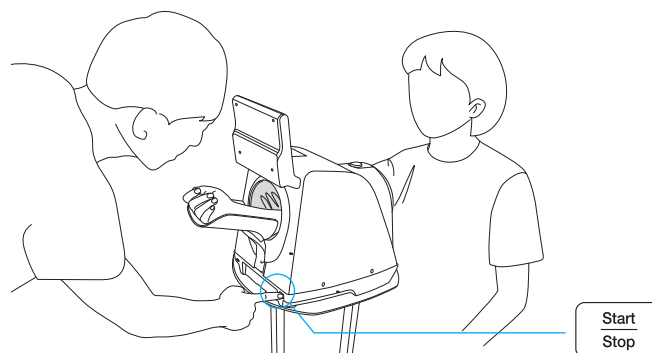
\* The user can check the position of the blood pressure result by using 'Check Blood Pressure Result' at the bottom left of the BPBIO750's display.

\* Please consult your physician for accurate diagnosis.



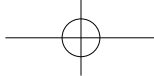
## 8. Others

The Start/Stop button at the bottom right of the back of the BPBIO750 also allows you to proceed with the test, which can be useful when the administrator is conducting a blood pressure test behind the BPBIO750.



### ! Note

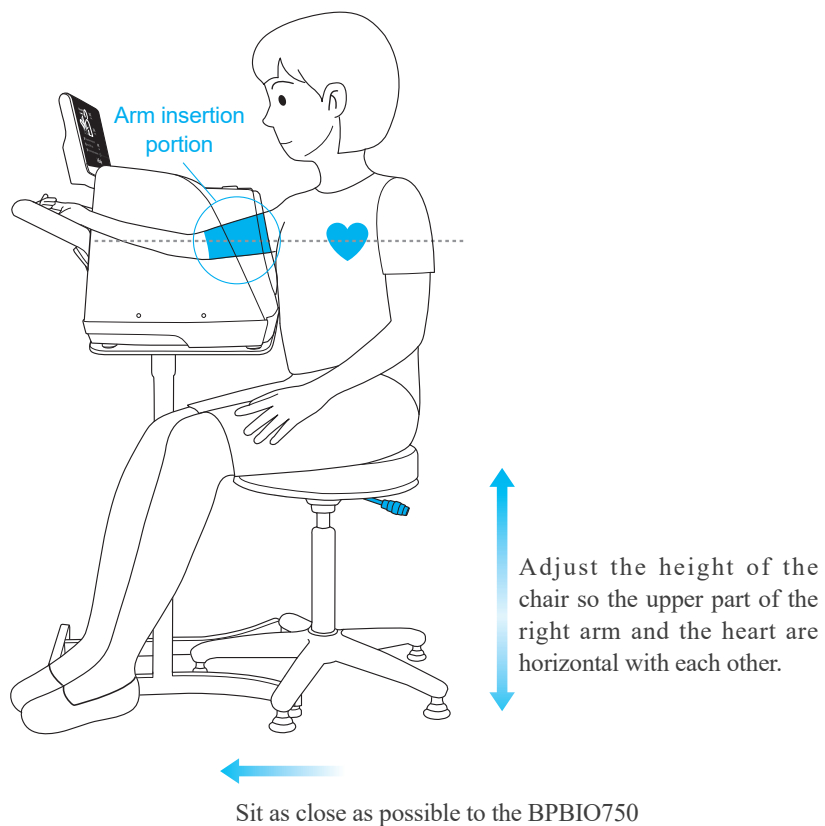
- Blood pressure can vary depending on the situation. Please consult your physician for accurate diagnosis.
- If the user wants to test the blood pressure again, please take a rest sufficiently more than 5 minutes.



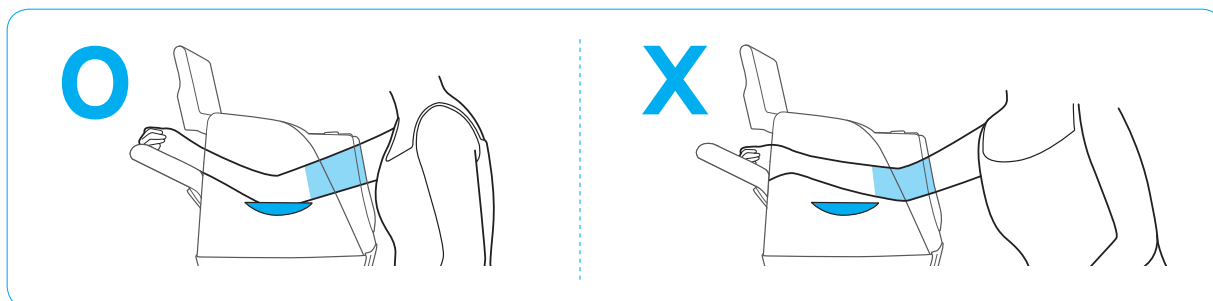
## C. Test Posture

For a correct test result, take a proper posture during the test.

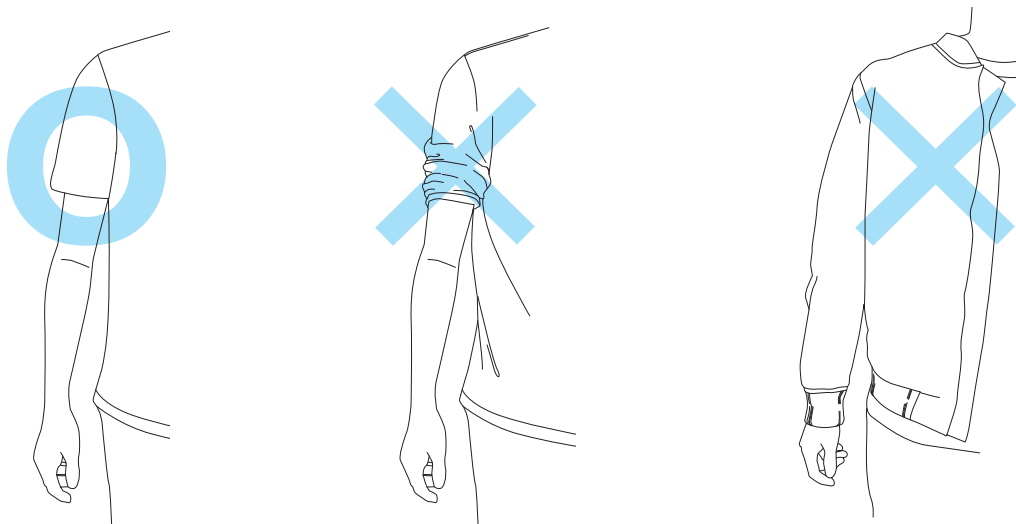
\* The measurement can be performed using either the right or left arm.



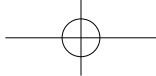
\* Be sure to place the elbow in the elbow groove before starting the test.



\* Take off thick clothes, and don't roll up the sleeves.



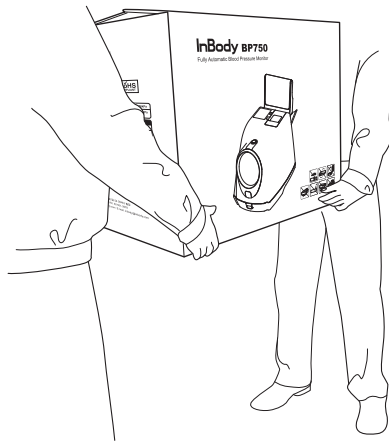




### III. Transportation and Storage

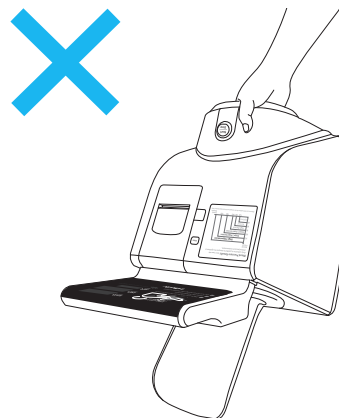
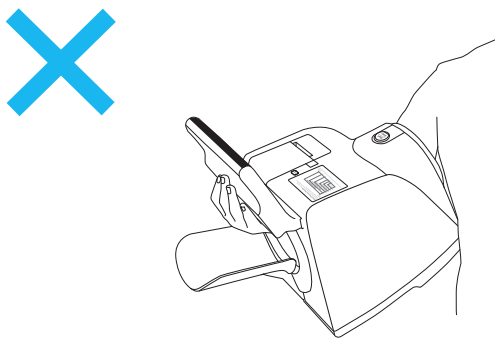
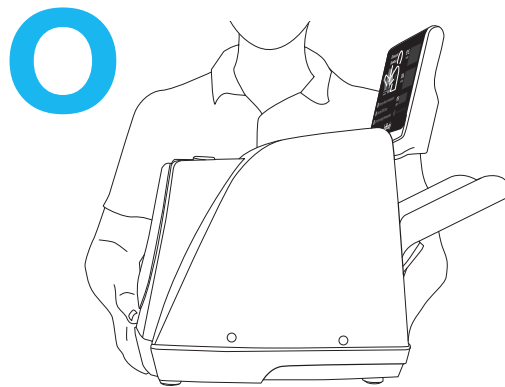
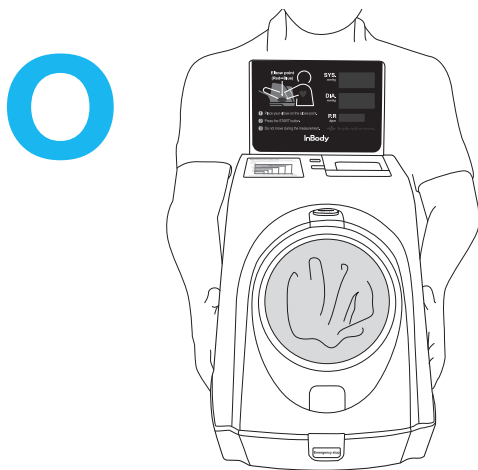
#### A. Cautions during Transportation

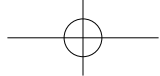
To transport BPBIO750 safely, two people should keep the equipment parallel to the ground.



#### Caution

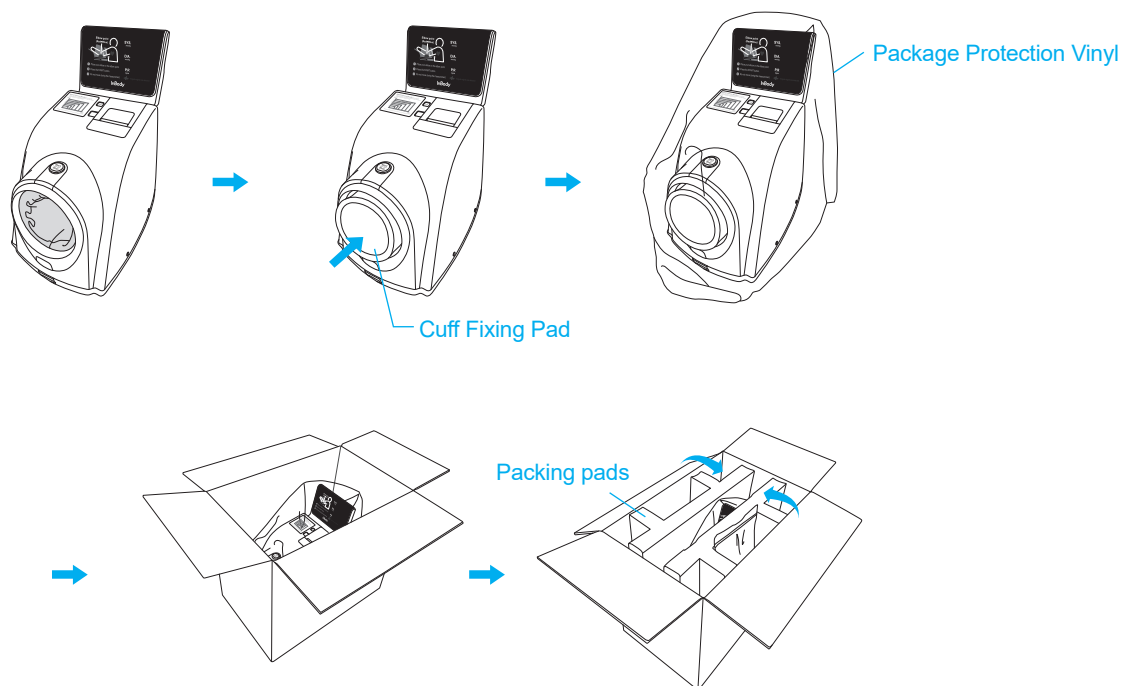
- Keep the equipment horizontal while transporting.





## B. Repacking Instructions

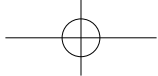
1. Turn off the BPBIO750.
2. Remove all connected cables and put the cuff fixing pad into BPBIO750, and wrap in package protective vinyl. After then, put the equipment in the package box, insert the packing pad and close the package box.



## C. Transportation and Storage Environment

BPBIO750 should be transported or stored under the following conditions.

Temperatures range	-10 to 70°C (14 to 158°F)
Relative humidity	10 to 80% RH (No Condensation)
Atmospheric pressure range	50 to 106 kPa



## IV. FAQ

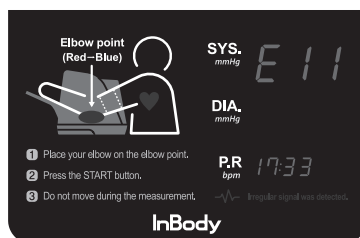
Frequently asked questions and answers for BPBIO750 are as follows.

If a problem persists even after checking below, please contact Customer Service Center of InBody.

InBody Customer Service Center (+82-80-501-3939)

### A. Error Code

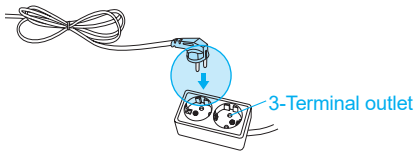
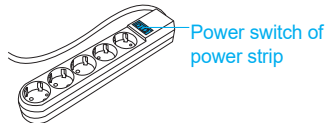
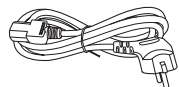
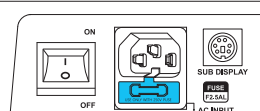
The error messages can be displayed on the screen if the error occurs during the test.

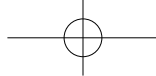


Please inform the error code to the Customer Service Center for the correct and fast support.

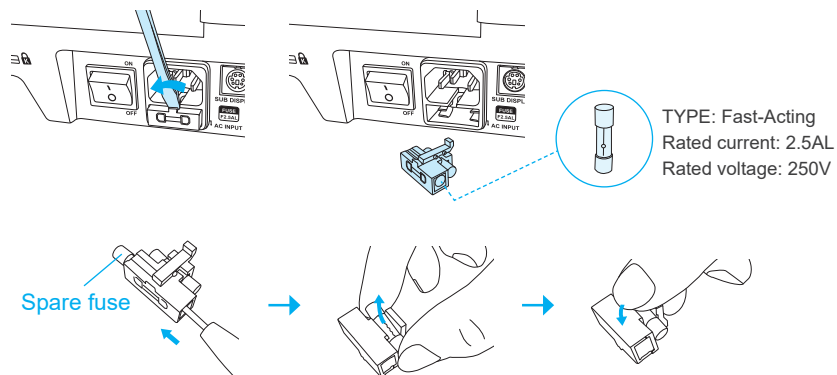
### B. Regarding the Equipment

The malfunctions were preferentially described in the sequence that the user should check first, and the user is assumed to know the basic usage instruction. If a problem still persists even after checks and measures, please contact our Customer Service Center.

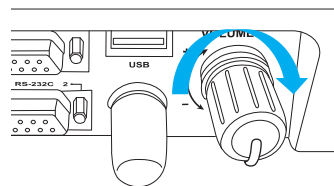
Question	Answer
· The device is not turning on	<ul style="list-style-type: none"><li>· Plug the power cable fully only into a properly grounded (3-terminal) outlet.</li><li>· When using a -power strip, make sure the power switch is turned on.</li><li>· Make sure the power cable (AC 250V 10A) provided by InBody.</li><li>· Turn off the BPBIO750, and replace the fuse.<ul style="list-style-type: none"><li>① The fuse socket is located on the back of the device beneath the power plug.</li><li>② Pull the fuse out by using a flathead screwdriver. Replace the fuse with the provided spare fuse. Additional fuses can be purchased if necessary.</li></ul></li></ul>



Question	Answer
----------	--------



- Voice guide does not work.
- Turn on the volume knob on the rear of the BPBIO750.



- It may be occurred when the Sound is set to Beep sound output.  
'F06'. When the Sound is set to 'BEEP', only the beep sound is outputted.  
If the user wants the Voice sound output, change the Sound to 'VOC'.
- \* Refer to the 'Setup' on page 11.

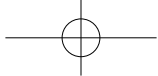
- Results sheet is not printing.
  - It may be occurred when the Outputting result sheet setting has been set not to print the results sheet.  
When 'F07', Automatic Printing Options is set to 'OFF', the Results sheet can be printed only manually.  
If you want automatic printing, change the setting to 'ON'.
- \* Refer to the 'Setup' on page 11.
- It may be occurred when the printer paper was all used up.  
Open the printer cover and check if the printer paper is consumed to replace it.
  - It may be occurred when the orientation of the printer paper is wrong.  
Open the printer cover, and check the orientation of the printer paper.
  - It may be occurred when the central cover does not close properly.  
Make sure that the printer cover was properly closed.
- \* Refer to 'Loading and Reloading Printer Paper' on page 8.

### Caution

- Repair and inspection can only be done by InBody personnel.  
For repair or inspection, please contact Customer Service Center (+82-80-501-3939) of InBody Co., Ltd.





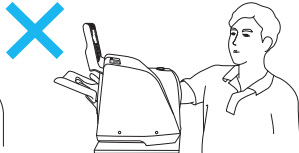
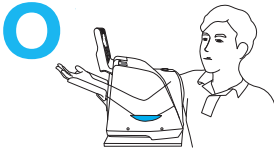
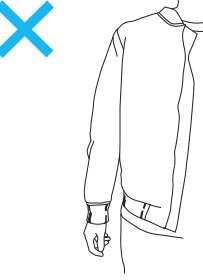


### Note

- Please record error messages that appear. It may be useful for Product Support.

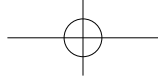


## C.Regarding the Test

If problems cannot be resolved with the information below, please contact InBody.

Question	Answer
· Test result are incorrect.	· The arm and heart are not aligned during the test. Adjust the height of the chair to align the arm and heart.  <div> Correct testing posture.</div> <div> Incorrect testing posture. The arm is higher than the heart. Blood pressure value will be measured lower.</div> <div> Incorrect testing posture. The arm is lower than the heart. Blood pressure value will be measured higher.</div>
· Inserting the arm too far or not far enough may produce incorrect results. Place elbow in elbow groove for accurate results.	<div></div>
· Thick clothes or rolled up sleeves may produce incorrect results. * The blood pressure value will be measured higher. Take off thick clothes, and don't roll up the thin sleeves.	<div></div>
· The user may have tested without sufficient rest. Take the test after resting at least 5 minutes. * The first test value will be measured higher even if taking a sufficient rest. Test again after 5 minutes.	
· Do not talk or move, and keep your gaze straight during the test.	

\* Blood pressure may vary throughout the day. InBody recommends testing at different times of the day.



Question	Answer
<ul style="list-style-type: none"><li>When should blood pressure be measured?</li></ul>	<ul style="list-style-type: none"><li>Blood pressure may vary throughout the day, as shown below.</li></ul> <div data-bbox="706 389 1474 791"><p><b>Blood pressure classification of World Health Organization</b></p><p>It is becoming increasingly clear that a series of symptoms are associated with the increased blood pressure in the morning.</p></div> <p>It is best to test at the same time each day under the same conditions.</p>
<ul style="list-style-type: none"><li>How frequently can tests be done?</li></ul>	<ul style="list-style-type: none"><li>The automatic blood pressure monitor checks blood pressure with pressure applied to the arm. Make sure to take a rest for about 5 minutes after one test, and carry out the next examination.</li></ul>
<ul style="list-style-type: none"><li>When shouldn't blood pressure be measured?</li></ul>	<ul style="list-style-type: none"><li>The automatic blood pressure monitor checks blood pressure with pressure applied to the arm. The blood vessel of the arm may get hurt due to the pressure applied to it during the blood pressure test if blood is drawn from the arm or an injection is made on the arm. It is recommended to not test within at least 1 hour.</li></ul>
<ul style="list-style-type: none"><li>Can results vary depending on the testing environment and temperature?</li></ul>	<ul style="list-style-type: none"><li>BPBIO750 can operate at 10°C to 40°C. However, if the user feels that the temperature is low or high, this feeling makes the blood vessels expand or contract, so it will ultimately affect the blood pressure results. It is recommended to test in a stable condition in an environment where no cold or heat is felt.</li><li>The user will not be able to perform a natural and stable test if the user is testing in a loud or distracted environment. It is recommended to test in an environment free from noise and disturbances.</li></ul>
<ul style="list-style-type: none"><li>What are some factors that can change the blood pressure ?</li></ul>	<ul style="list-style-type: none"><li>The blood pressure may change as follows:<ul style="list-style-type: none"><li>- Within 1 hour after meals</li><li>- After having liquors, coffee, or black tea</li><li>- After smoking</li><li>- After taking a bath</li><li>- After exercise</li><li>- After urination or defecation</li><li>- When the test place is different than usual</li></ul></li></ul>
<ul style="list-style-type: none"><li>The blood pressure values are different at home and at the hospital.</li></ul>	<ul style="list-style-type: none"><li>Blood pressure can change depending on the environment. Test in the same environment when managing blood pressure.</li><li>Hospital-tested blood pressure tends to be higher than home-tested blood pressure.</li></ul>

## V. Others











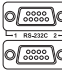




\* BPBIO750 was manufactured by the quality control procedure of InBody Co., Ltd. InBody Co., Ltd. complies with ISO9001 and ISO13485 which are international quality management systems.

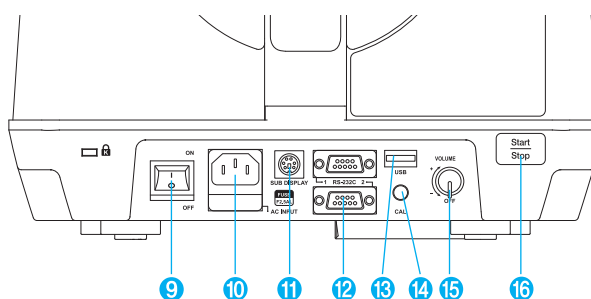
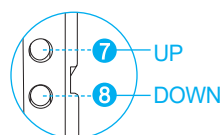
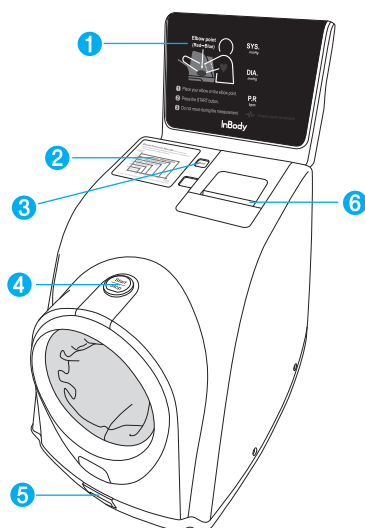
\* This equipment satisfies the common standard for electrical and mechanical safety of medical devices and the common standard for the safety of medical devices.

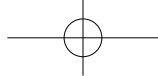
### A. Exterior and Functions

The names and functions of each part of BPBIO750 are as follows:

\* Please check each component of the system for damage prior to installation.

- 1  : Display screen to express result values and test instruction
- 2  : Blood pressure result graph for checking
- 3  : Button to print Result Sheet
- 4  : Button to start or stop a test
- 5  : Button for an emergency stop in case of an emergency situation during a test
- 6  : Cover for thermal printer
- 7 8  : UP/DOWN buttons to adjust the system setting values
- 9  : Switch to turn the equipment on/off
- 10  : Input terminal of external power supply (110-120/200-240V, 50/60Hz), Fuse (F2.5AL, 250V)
- 11  : Terminal to communicate with the multi-display device
- 12  : RS232 (serial communication) terminal
- 13  : USB Port
- 14  : Port to connect a mercury monitor in order to adjust the pressure value
- 15  : Knob to adjust volume
- 16  : Rear Start/Stop button





- Do not touch signal input, signal output or other connectors, and the patient simultaneously.
- External equipment intended for connection to signal input, signal output or other connectors, shall comply with relevant IEC

Standard (e.g., IEC60950 for IT equipment and IEC60601-1 series for medical electrical equipment). In addition, all such combination

- system-shall comply with the standard IEC60601-1 and/or IEC60601-1-1 harmonized national standard or the combination. If in doubt, contact qualified technician or your local representative.

## B. Safety Information

\* The BPBIO750 is manufactured according to the quality management procedure of InBody. InBody complies with the ISO9001 and ISO13485 which are international quality management systems.

\* This equipment satisfies the IEC60601-1 (EN60601-1), an international safety standard for electronic medical equipment. This equipment also satisfies the IEC60601-1-2 (EN60601-1-2), an international standard for electromagnetic conformity.

\* This equipment has been tested and found to comply with the limits for medical devices in EN 60601-1-2.






These limits are designed to provide reasonable protection against harmful interference in a typical medical installation. This equipment generates uses and can radiate radio frequency energy; and, if not installed and used in accordance with the instructions, may cause harmful interference to other devices in the vicinity. However, there is no guarantee that interference will not occur in a particular installation. If this equipment does cause harmful interference to other devices, which can be determined by turning the equipment off and on, the user is encouraged to try to correct the interference by one or more of the following measures:

- Reorient or relocate the receiving device.
- Increase the separation between the equipment.
- Connect the equipment into an outlet on a circuit different from that to which the other device(s) are connected.
- Consult the manufacturer or field service technician for help.

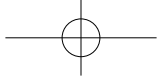
Do not attempt to disassemble or change the equipment arbitrarily. The equipment has no internal parts in the user operation, it can result in electrical shock.

If the equipment has changed, we need to ensure the continued safe use through adequate inspection and testing.








### Safety Symbols

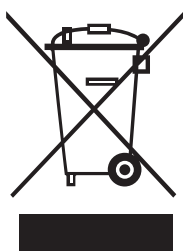
	Danger high voltage
	Warning / Caution / Note
	BF-type equipment
	Power supplied
	Power cutoff





## Other Symbols

	Complies with AAMIES 6060-1 CSA-C22. 2 No.60601-1		European conformity
	Manufacturer		Serial number
	Authorized representative in the EUROPEAN COMMUNITY		Alternating current
	Operating instructions		

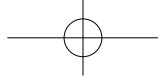


Disposal of old Electrical & Electronic Equipment (Application in the European Union and other European countries with separate collection system.) This symbol indicates that this product shall not be treated as household waste. Instead, it shall be handed over to the applicable collection point for the recycling of electrical and electronic equipment. By ensuring this product is disposed of correctly, you will help prevent potential negative consequences for the environment and human health, which could otherwise be caused by inappropriate waste handling of this product. For more detailed information about recycling this product, please refer to local governing ordinances and recycling plans.

## C. Product Classification

Oscillometric multi-functional electronic blood pressure monitor

- Type of protection against electric shock: Class 1 device
- Level of protection against electric shock: BF-type
- Class against electromagnetic radiation intensity: Class A
- Level of protection against flooding: General Equipment (No special protection against external water infiltration)

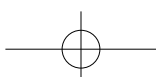
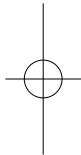
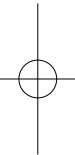
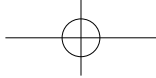


## D. Product Specifications

Test Instructions	Oscillometric
Test range	Pressure: 0 to 300 mmHg      Pulse: 30 to 240 bpm
Degree of precision	Pressure: $\pm 2$ mmHg      Pulse: Within $\pm 1.5\%$
Test result	Systolic blood pressure, diastolic blood pressure, pulse rate, pulse pressure, mean blood pressure, rate pressure product
Test Time	Approx. 30 seconds on average (20-50 seconds depending on the pulse and blood pressure value)
Pressurization Time	Approx. 10 seconds
Minimum scale unit	1mmHg
Screen Type	7-Segment LED
Results sheet output	Result value, blood pressure graph, blood pressure common sense, PULSE graph, and other guides
Storage function	Can store the total result for up to 1 million tests
Energy saving	Automatically enters the energy saving mode after 2 minutes of the last test.
Dual safety mechanism	When the Start/Stop button is pressed, the cuff rapidly releases air. The cuff automatically releases when the air pressure exceeds 300 mmHg. When the Emergency Stop button is pressed, the cuff quickly deflates. (The dual safety mechanism enables the cuff to release and exhaust regardless of the central controller when the Emergency Stop button is pressed.)
Voice guide	Guides user through blood pressure measurement and results.
Printer	High-speed thermal printer equipped with automatic cutter (width: 2.5 inches)
Rated voltage and Power consumption	AC 100-240V, 50 / 60Hz, 36VA
Dimensions	Approx. 299 (W) $\times$ 547 (D) $\times$ 485 (H) mm Approx. 11.8 (W) $\times$ 21.5 (D) $\times$ 19.1 (H) in.
Weight	Approx. 7.1 kg (15.65 lbs)
Operating environment	Temperature 10-40°C(50-104°F), Humidity 30-75% RH, Atmospheric pressure 70-106 kPa
Storage environment	Temperature -10-70°C(14-158°F), Humidity 10-80% RH, Atmospheric pressure 50-106 kPa (No Condensation)

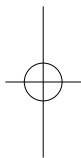
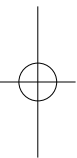
\* For purposes of improvement, specifications are subject to change without notice.

\* This product is a 'medical equipment'. Please read the guide and cautions before using this blood pressure monitor.





[www.inbody.com](http://www.inbody.com)



CE<sub>0120</sub>

©2019 InBody Co., Ltd. All rights reserved. BM-ENG-H2-A-190522

