

InBody970

User's Manual

InBody970 User's Manual for Measurement Guide and Setup

Thank you for purchasing the InBody970. This user's manual describes all the features of the InBody970.

Please read before use and keep it in a safe place. By following properly these instructions, you will be able to use the InBody970 more safely and effectively.

Intended Use and Medical Indication

InBody970 is mainly used for healthy and acute or chronically ill populations in hospitals, medical practices and inpatient care facilities in accordance with national regulations. It can be used to assist in the assessment of nutritional status, obesity and muscle balance. Body composition analysis is important in changing the daily life style habits of a subject since it provides the basis of appropriate physical activity and dietary habits for improving personal daily routine. It can be also usefully applied to follow-up studies of patients who have been treated for various diseases.

- Medical checkups: Body composition analysis enables health checkups by identifying the risk of diseases closely related to body composition imbalances such as obesity, malnutrition, body water imbalance, and osteoporosis.
 - Obesity: Percent body fat is considered to be more appropriate rather parameter than BMI to ensure proper weight loss and improvements in long-term health, tracking changes for adjusting/developing customized treatments.
 - Pediatric obesity: Body composition analysis is an essential part of health assessments for children and adolescents. Percent body fat could be a useful parameter than just weight to verify health condition in children and adolescents.
 - Sarcopenia: InBody Test is a quick and easy way to provide the Skeletal Muscle mass Index (SMI), which is the sum of the skeletal muscle mass of the limbs divided by the height square. This parameter is useful for identifying muscle loss or low muscle that increase risks of falls, disability, poor quality of life, and premature death.
 - Diabetes & Endocrinology: Diabetes is often associated with excess fat, however having insufficient muscle mass is just as detrimental and increases diabetes risk. Visceral fat also plays a key role in the development of metabolic and cardiovascular disease.
 - Edema: The ECW Ratio (ECW/TBW) is associated with residual renal failure, inflammation, malnutrition, and hypertension, which are common in dialysis patients. Monitoring the ECW Ratio (ECW/TBW) allows the assessment of body water accumulation in the extracellular water due to impaired cardiovascular function. Even in cirrhosis, patients with high ECW Ratio can be used to recognize the risk of ascites, and have a high prognosis in critically ill or surgical patients.
 - Segmental ECW Ratio: InBody directly & separately measures each segment of the body and provides each segmental ECW Ratio and it can be used to detect body water imbalances resulting from the development or progression of lymphedema.
 - Nutrition: ABCD method in nutrition is a mnemonic of four primary components of nutritional assessment. “A” stands for anthropometric measurements including stature, body weight, BMI, and body composition. Body composition analysis can reveal changes in body composition (body water, protein, minerals, and body fat) that cannot be known by changes in body weight.
 - Fitness: Strength training stimulates muscle growth, exercise burn the calories strengthens cardiorespiratory capacity, which reduce the risk of diabetes, heart disease, and other health concerns and result in the various changes in body composition. Body composition analysis shows skeletal muscle mass and segmental muscle mass, and it helps to focus on building more muscle with symmetrical or lateral balance.
- * The InBody970 is not a diagnostic device. To make an accurate diagnosis, a physician must go through a thorough examinations and take their results into account in addition to the results of the InBody970.
- * he InBody970 is not used in home healthcare environment

Please refer to the important information below before reading this manual.



Warning

Failure to comply with safety warnings and regulations can cause serious injury or death.



Caution

Failure to comply with safety cautions and regulations can cause injury or property damage.

InBody

InBody Co., Ltd. [HQ]

625, InBody Bldg., Eonju-ro, Gangnam-gu, Seoul 06106 Republic of Korea

TEL: +82-2-501-3939 FAX: +82-2-578-5669 Website: inbody.com E-mail: info@inbody.com



InBody Co., Ltd. [MANUFACTURER]

15, Heugam-gil, Ipjang-myeon, Seobuk-gu, Cheonan-si, Chungcheongnam-do 31025 KOREA

TEL: +82-41-581-3003 FAX: +82-41-581-3103 Website: inbody.com E-mail: info@inbody.com

©2022 InBody Co., Ltd. All rights reserved.

Reproduction, adaptation, or translation of this manual is prohibited without prior written consent from InBody Co., Ltd. under the copyright laws. This manual may be printed incorrectly and subject to change without notice. InBody Co., Ltd. shall not be liable for any errors, incidental, or consequential damages that occurred by not complying with the content of the User's Manual.

Visit our website (inbody.com) to view and download additional information about the InBody970. InBody Co., Ltd. reserves the right to modify the appearance, specifications, etc. of this product to improve its quality, without prior notice.

Representative & Sponsor Information



InBody Europe B.V.

Gyroscoopweg 122, 1042 AZ, Amsterdam, The Netherlands

TEL: +31-20-238-6080 FAX: +31-6-5734-1858 Website: nl.inbody.com E-mail: info.eu@inbody.com

Australian Sponsor: [AUSTRALIA]

Emergo AUSTRALIA. Level 20, Tower II, Darling Park, 201 Sussex Street, Sydney, NSW 2000, AUSTRALIA

Customer Service Information

InBody USA [USA]

13850 Cerritos Corporate Dr. Unit C Cerritos, CA 90703 USA

TEL: +1-323-932-6503 FAX: +1-323-952-5009 Website: inbodyusa.com E-mail: info.us@inbody.com

InBody Japan [JAPAN]

Tani Bldg., 1-28-6, Kameido, Koto-ku, Tokyo 136-0071 Japan

TEL: +81-3-5875-5780 FAX: +81-3-5875-5781 Website: www.inbody.co.jp E-mail: inbody@inbody.co.jp

InBody China [CHINA]

903/904, XingDiPlaza, No.1698 YiShanRoad, Shanghai 201103 China

TEL: +86-21-64439705 FAX: +86-21-64439706 Website: inbodychina.com E-mail: info@inbodychina.com

InBody Asia [ASIA]

Unit 3A-11, Oval Damansara, 685 Jalan Damansara Kuala Lumpur, WP KL 60000 Malaysia

TEL : +60-3-7732-0790 FAX: +60-3-7733-0790 Website: inbodyasia.com E-mail: info@inbodyasia.com

InBody India [INDIA]

57/57 A, 1st Floor, Raj Industrial Complex, Military Road, Marol, Andheri (East). Mumbai- 400059, Maharashtra, India

TEL : +91-22-6223-1911 Website: inbody.in E-mail: india@inbody.com

InBody970

Table of Contents

I. InBody Installation

A. Product Components	4
B. Installation Environment	5
C. Installation Instructions	5
D. Initial Setup	9
E. Connecting Compatible Device	13
F. Precautions for Maintenance	20

II. InBody Test

A. Precautions for Measurement	21
B. Test Instructions	22
C. Test Posture	25

III. Transportation and Storage

A. Cautions during Transportation	26
B. Repacking Instructions	26
C. Transportation and Storage Environment	27

IV. Frequently Asked Questions (FAQ)

A. Regarding the Device	28
B. Regarding the InBody Test	30

V. Others

A. Exterior and Functions	31
B. Safety Information	34
C. Classifications	35
D. Specifications	35
E. Functional Specifications	37
F. Other Specifications	38

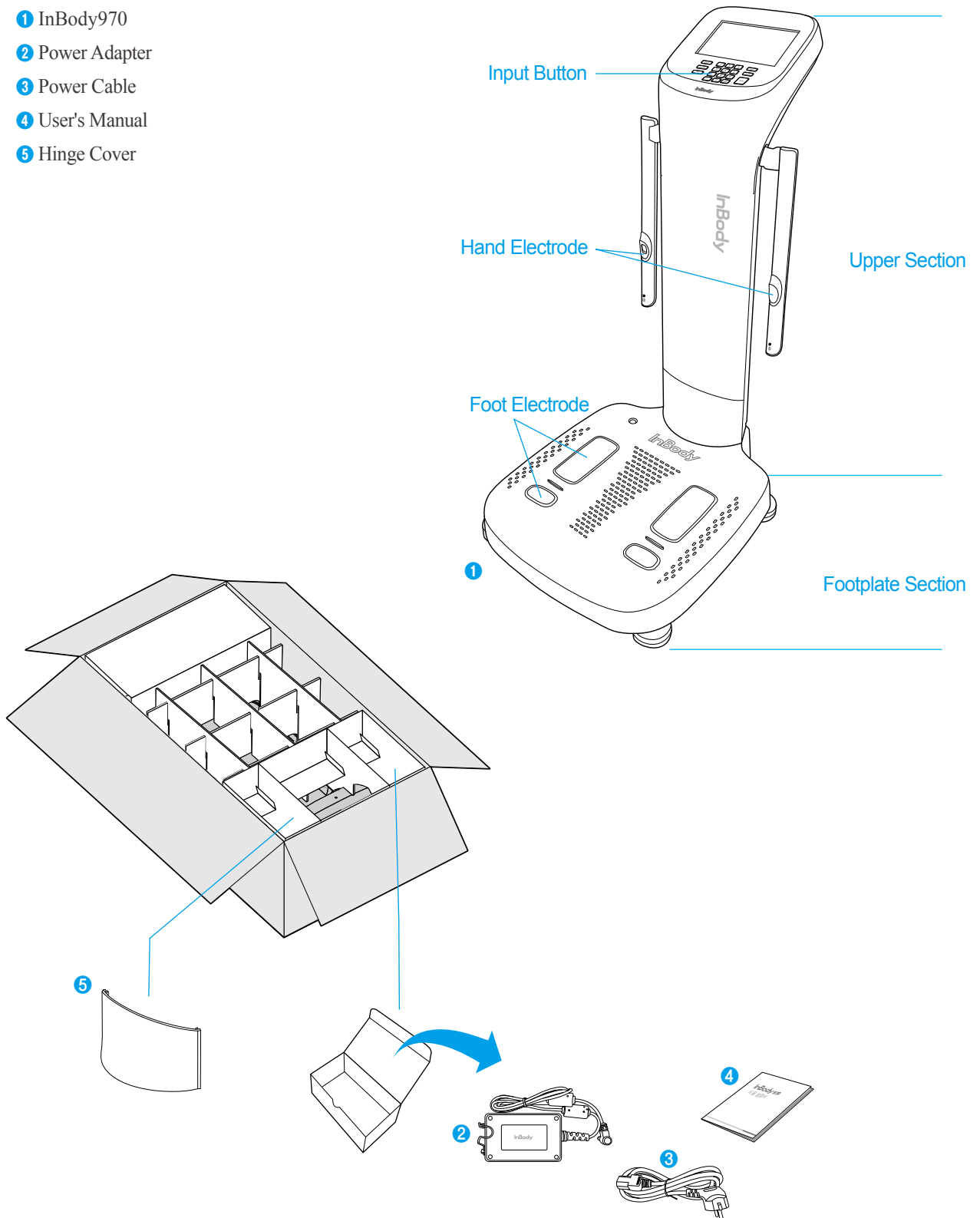
I. InBody Installation

A. Product Components

InBody970 consists of the following components. Make sure all of the following components are present.

* Please check if the InBody970 has any damage prior to installation.

- ❶ InBody970
- ❷ Power Adapter
- ❸ Power Cable
- ❹ User's Manual
- ❺ Hinge Cover



B. Installation Environment

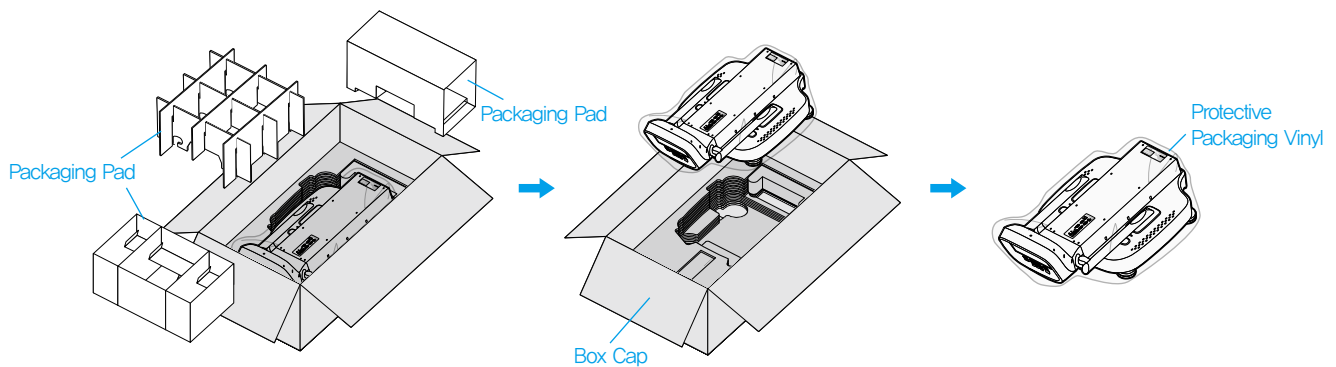
Check the environment before installing the InBody970. This device is suitable for indoor use.

If installing this device outdoors, the following requirements must be fulfilled.

Temperature	10 ~ 40°C (50 ~ 104°F)
Relative humidity	30 ~ 75% RH
Atmospheric pressure	70 ~ 106kPa

C. Installation Instructions

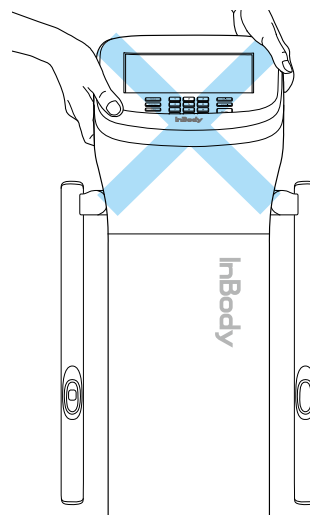
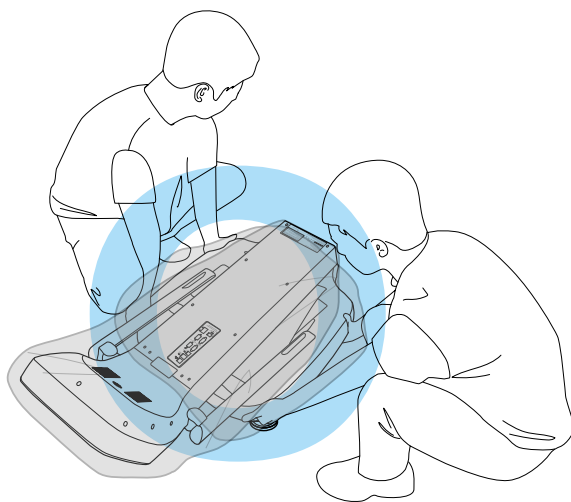
1. Open the InBody970 packing box and remove the packaging pad. Take the InBody970 out of the packing box.



Caution

- When transporting the device, do not grab upper section (LCD) or hand electrode connection area.
- For repackaging InBody970 at a later time, the supplied packing materials must be kept. Other wastes should be disposed according to relevant local laws and regulations.
- Be careful not to get your hands or feet caught by the packing box.
- Be careful for children not to enter the packing box.
- Do not put protective packaging vinyl on your face.

* Refer to the figure below when transporting InBody970.



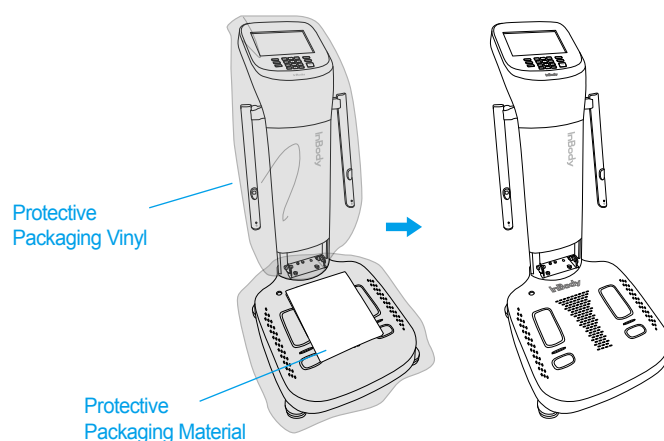
* Do not transport InBody970 by holding the head.

⚠ Caution

- Using InBody970 in a dry environment or on a carpet may result in static electricity and damage to the device. Use an antistatic mat if you need to install in an environment with static device.
- Install the InBody970 on the floor that is flat and vibration-free. If the equipment is installed where the floor is not flat, it may topple during a test or the test results may be inaccurate.
- Do not clean the foot electrode and the hand electrode with detergent. If liquid cleaner flows into InBody970, it may cause corrosion and malfunction. For cleaning the InBody970, use an InBody Tissue (wet tissue).

2. Raise the InBody970 upper section to the end and then remove the protective packaging vinyl.

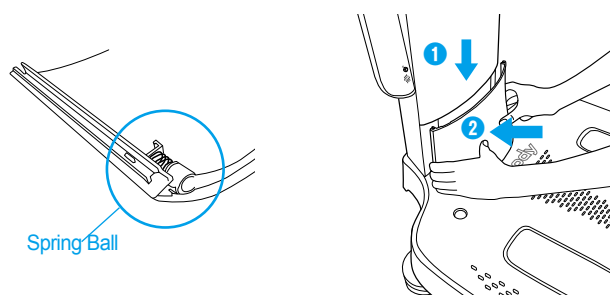
Remove the protective packaging material placed over the footplate.



3. When assembling the hinge cover, push it slightly in the vertical direction so that the spring ball is inserted in the stand end, and push the hinge cover into the direction of the arrow.

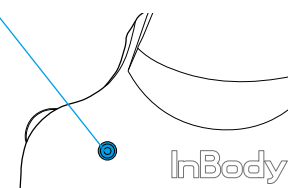
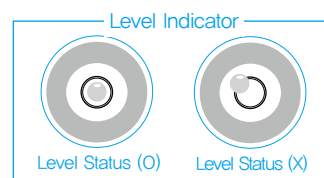
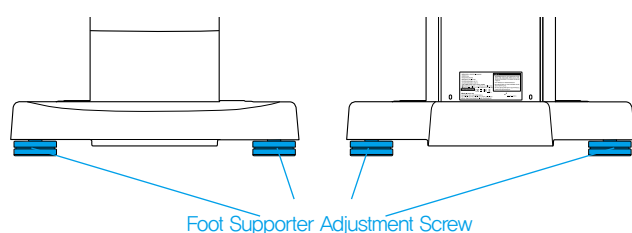
* If the hinge cover is pressed strongly after the spring is inserted fully, or the stand is lowered with it attached, it may cause scratches.

* Be careful not to get your fingers caught when assembling the hinge.



4. Adjust the foot supportors to center the bubble in the level indicator and to level the device for accurate weight measurement.

* For accurate weight measurement, the device should be leveled.

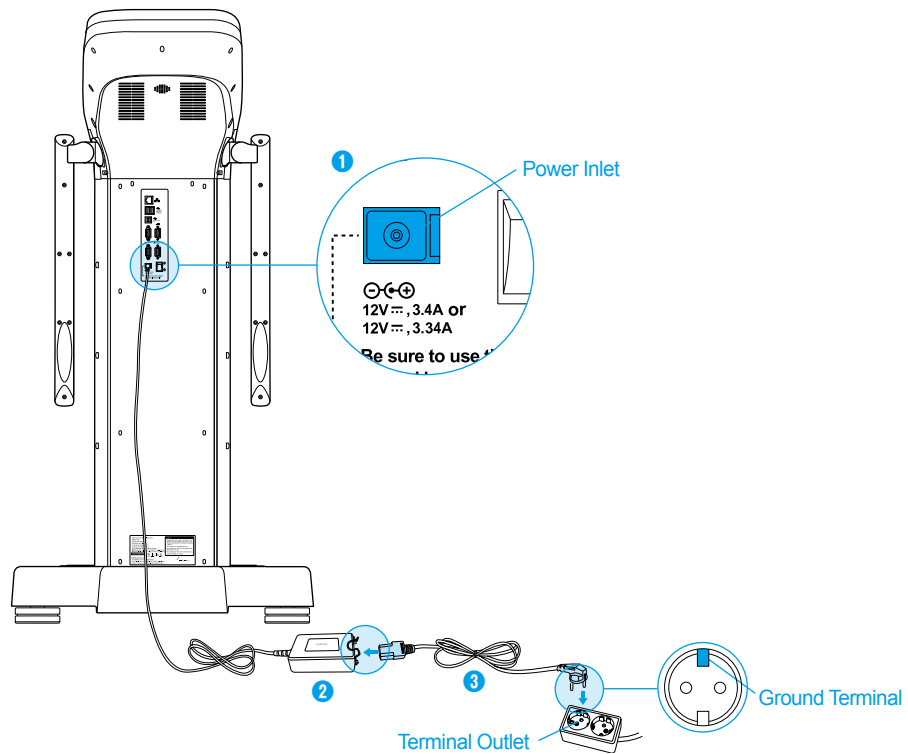


⚠ Caution

- Be careful not to get your hands hurt when handling the foot supporter adjustment screw.

5. Connect the power adapter ② to the power inlet on the rear of InBody970 ①. Connect the power cable ③ to the connected power adapter ②. Connect the plug of the power cable ③ to a 3-terminal outlet with a ground terminal.

* The InBody970 can be connected to optional devices such as stadiometer, blood pressure monitor, and Yscope and PC program, LookinBody120.
Please refer to "E.Connecting Compatible Device" in "I.InBody Installation" in this User's Manual.



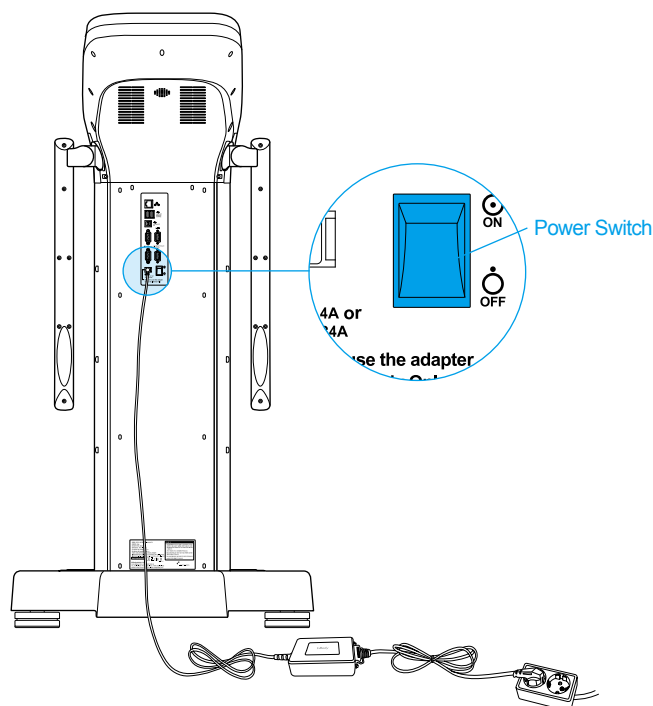
Warning

- Do not pull the power cord violently.
- Do not plug in or pull out the power cord with wet hands. There is a risk of an electric shock.
- Always use an outlet connected to the rated power (AC 100 - 240 V). Using other power rated outlets may result in fire or malfunction.
- When using a power surge protector, make sure that the outlet or the extension cable has adequate power capacity.
- Do not disassemble or modify the device including internal parts without written consent from the manufacturer. This may cause electric shock or injury, product malfunction, inaccurate results, and will void the manufacturer's warranty.
- Do not directly contact the InBody970 with any other electronic devices when the InBody970 is on. This may result in an electric shock.
- If you are not using the InBody970 for a long time, unplug the power code.

Caution

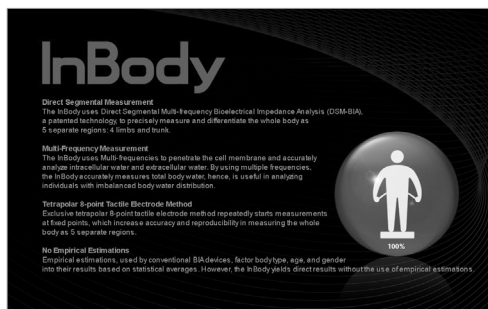
- The device may get damaged or malfunctioned due to the electric if plugging into an ungrounded outlet. Or the test results may be inaccurate.
- If InBody970 is subjected to electrical interference, the test results may be inaccurate. Do not install InBody970 in close proximity with fluorescent lights, equipment with a large AC motor such as treadmills, vibrating platform refrigerators, air conditioners, compressors, etc., high-frequency heat treatment devices, and heating devices that cause electrical interference. Unplug and plug them into different power outlets when InBody970 and a device that causes electrical interference are connected to the same power outlet.
- If you are connecting the InBody970 to other device then turn on the other device first.
On the contrary, turn off the power of InBody970 first, and then turn off the power of the other device when turning off the power. This can minimize the electric shock to the InBody970.
- Use the adapter provided by InBody. The InBody970 may malfunction when using other adapters.
- If you are operating the device in a place where the altitude is 2,000m or higher, the weight measurement may be affected.
- Do not use InBody970 near heat sources such as heating appliances. It may cause deformation, breakdown or fire by heat.
- Use InBody970 in a location where it is not exposed to direct sunlight. It may cause discoloration or damage of device.
- Be careful not to pull the cables connected to the device. Otherwise, it may cause a weight measurement error.

6. Press the power switch to turn it on.

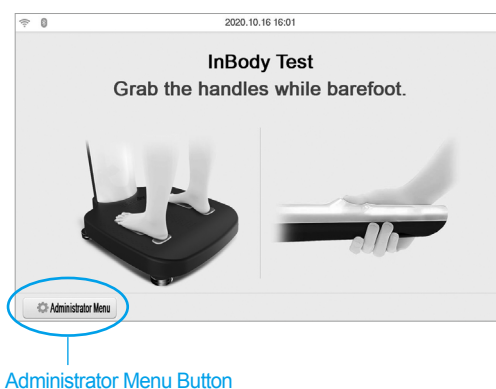


D. Initial Setup

1. The InBody970 automatically starts booting when it is turned on. While booting, it performs a self weight calibration. (While booting (about 5 minutes), make sure there is nothing on top of the footplate. Please do not stand on the footplate, or place objects on the footplate.)



2. Press the [Administrator Menu] on the test standby screen.



3. Enter the administrator password to set the password. This screen will appear only once for initial password setup.

Administrator Menu Access

Exit

Please set the administrator password.

The password settings are only made once at first. Further changes of the password are possible at 'Setup > 01. Date/Date Format/Time/Unit/Password'.

Password

Enter

Administrator Menu Access

Exit

Input password once again to complete the setup.

The password settings are only made once at first. Further changes of the password are possible at 'Setup > 01. Date/Date Format/Time/Unit/Password'.

Password

Done

* Be careful not to forget the password you set. If you have forgotten your password, please contact InBody Customer Service.

4. You will see 'Setup' and 'FAQ' when you enter Administrator Menu.

IB970-1.0

Setup

FAQ

Exit

01. Date/Date Format/Time/Units/Password/Volume/Country/Language
02. Self Mode/Professional Mode Professional Mode
03. N/A
04. Cloud Service X
05. Bypass Age/Gender Age/Gender Required
06. View/Print/Delete Data
07. Export Data as Excel
08. Data Backup/Restore/Combine

← 1 2 3 4 →

Setup

FAQ

Exit

01. Customer Service Information
02. Results Sheet does not print
03. Weight is not being measured
04. Weight measurement seems to be inaccurate
05. The InBody Test has stopped
06. Test results seem to be inaccurate

← 1 →

Setup

FAQ

1) Setup: Configure settings and manage data according to the test environment.

01. Date/Date Format/Time/Units/Password/Volume/Country/Language

: This option allows changing the basic settings of the InBody970.

02. Self Mode/Professional Mode

- Self Mode: The subject takes the InBody Test by entering only his/her height.

Throughout the test, instructions and the InBody Information will be shown on the screen.

- Professional Mode: An instructor is present and guides the subject throughout the InBody Test.

03. N/A

04. Cloud Service

: This is a service that can be used after agreeing to the privacy policy, and allows to send the results to the cloud so that members can check and manage the InBody test results by themselves.

* Cloud service is a paid service.

05. Bypass Age/Gender

: The subject can bypass inputting their age or gender if the test environment is designed for testing a specific age group or gender

06. View/Print/Delete Data

: This option allows checking, printing or deleting the test result stored in the InBody970 as a membership number or mobile number.

07. Export Data as Excel

: This option allows copying the test result saved in the InBody970 to InBody USB as an Excel file format.

08. Data Backup/Restore/Combine

: This option allows saving the test results to InBody USB for backup or restores the test results backed up to the InBody970. If you are using multiple products, the data can be merged together.

09. Printer Setup

: This option allows setting the printer to connect to the InBody. Connect the printer to the InBody to print your result sheet.

10. Result Sheet Types

: This option allows setting and selecting the Result Sheet to print among Result Sheets.

(Body Composition Result Sheet, Body Water Result Sheet, Evaluation Result Sheet, Research Result Sheet, Comparison Result Sheet, Body Composition Result Sheet for Children, Visceral Fat Result Sheet)

11. Automatic Printing Options

: This option allows setting the Result Sheet to be printed automatically after completing the test. You can print up to two Result Sheets per each Result Sheet type at one time.

12. Paper Types

: Select the paper type for printed Result Sheet. Options include blank A4 paper or pre-printed InBody Result Sheets provided by InBody.

13. Outputs/Interpretations for Result Sheet

: This option allows setting the parameters or explanations that appear on the right side of Body Composition Result Sheet, Body Composition Result Sheet for Children, and Body Water Result Sheet.

14. Result Sheet Custom Logo

: You can preview the logo printed on the upper right of the Result Sheet.

* Please contact Customer Service for help with uploading or modifying a logo.

15. Printing Alignment

: This option allows adjusting the position of the result to be printed on the Result Sheet.

16. Internet Options

: Connect the InBody970 to the Internet via Wi-Fi or LAN. Once the InBody970 is connected to the Internet, the InBody970 test results can be sent to the cloud, or the LookinBody120 that can be connected remotely.

17. Bluetooth

: This option allows setting up the Bluetooth so that the InBody970 can connect to LookinBody120, or to other compatible devices such as BSM Stadiometer series, BPBIO Blood Pressure Monitor series, or Yscope.

* For details to connect Bluetooth, please refer to "E Connecting Compatible Device" in "1. InBody Installation" in this User's Manual.

18. Manual/Automatic Weight

: Select whether to proceed testing by entering the subject's weight manually or by taking the weight measurement automatically.

19. Adjust Weight

: Adjust measured weight by a fixed value on the InBody. (Example: Workout clothes at the gym are approximately 0.2kg; most people are assumed to be wearing workout clothes, so the instructor may adjust the set value to -0.2kg.)

20. Normal Range

: This option allows setting the normal range of BMI, Percent Body Fat, and Waist-Hip Ratio.

* The ideal value of BMI may also be set.

21. N/A

22. Standard Child Growth Curve

: Set the type of standard child growth curve to use on the Body Composition Result Sheet for Children.

23. Touchscreen Alignment

: This option allows calibrating the accuracy of the touch screen.

24. Customer Service Information

: Save the Customer Service contact information. Please refer to the Customer Service information if you have any inquiries regarding the InBody Test, or problems that cannot be resolved through the 'FAQ' menu.

25. Auto-Lock

: This option allows setting the time before the screen is locked and the corresponding password to restrict using the InBody970.

26. Etc. Function Setup

: Set whether to use the fingerprint recognition function or the InBody BAND recognition function.

2) FAQ: See additional information on how to use the InBody. Refer to FAQ checklist when there are problems that occur while using the the InBody.

01. Customer Service Information

: This shows the information saved in the "Setup: 24. Customer Service Information". so that you can use it when you have an inquiry about InBody or a problem occurs.

02. Result sheet does not print.

: View the FAQ checklist when the Result Sheet does not print.

03. Weight is not being measured.

: View the FAQ checklist when weight is not being measured.

04. Weight measurement seems to be inaccurate.

: View the FAQ checklist when the weight measurement seems to be inaccurate.

05. The InBody Test has stopped.

: View the FAQ checklist when the InBody Test has stopped.

06. Test results seem to be inaccurate.

: View the FAQ checklist when the test results seem to be inaccurate.

E. Connecting Compatible Device

To connect an compatible device to InBody970, check the communication method of the compatible device. There are two ways of communication; wired connection such as USB or RS232C (9-pin serial terminal, Female), and wireless connection (Bluetooth).

1. Wired connection

1) Printer

The Result Sheet can be printed if the printer is connected to InBody970.

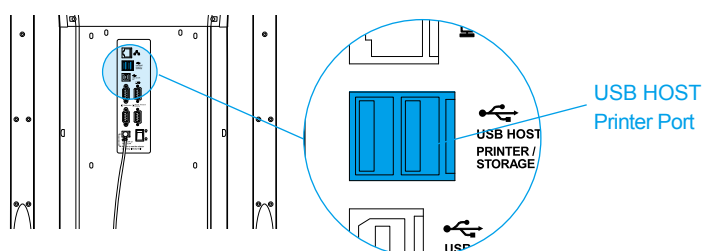
* Please visit the following website to find out the compatible printers for InBody970 : <https://www.inbodyservice.com>

❶ Turn off InBody970.

* When InBody970 is already turned on, the printer might not properly connect.

❷ Connect the USB cable supplied with the printer to the USB HOST printer terminal on the rear of InBody970.

Connect the other end of the USB cable to the USB connection terminal of the printer.



❸ Turn on the printer.

❹ Connect the printer according to the instructions on "09. Printer Setup" in Setup in Administrator Menu.

❺ You can set the options related printing from "10.Results Sheet Types" to "15.Printing Alignment" in Setup in Administrator Menu.

2) Stadiometer

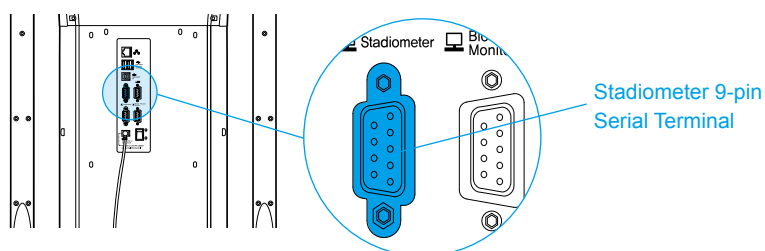
The height values measured by the stadiometer are sent to InBody970 when it is connected to InBody970.

* Please make sure to connect only BSM Stadiometer series provided by InBody.

❶ Turn off InBody970.

* When InBody970 is already turned on, the stadiometer might not properly connect.

❷ Connect the serial cable supplied with the stadiometer to the Stadiometer 9-pin serial terminal on the rear of InBody970. Connect the other end of the cable to the serial terminal of the stadiometer.



❸ Turn on the stadiometer.

❹ Turn on InBody970. When the stadiometer is connected, () icon will be displayed in the upper left of the test standby screen.

3) Blood Pressure Monitor

The blood pressure values measured by the blood pressure monitor are sent to InBody970 when it is connected to InBody970.

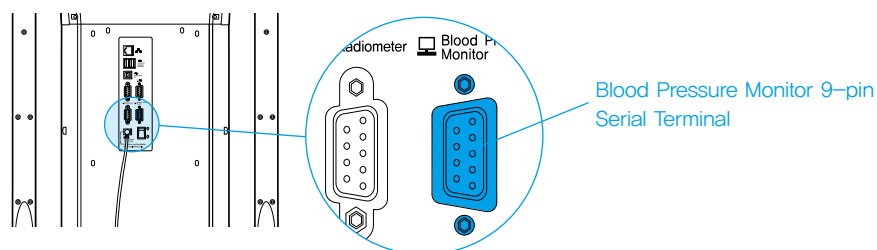
* Please make sure to connect only the BPBIO Blood Pressure Monitor series provided by InBody.

* If you select the type of Result Sheet at "13.Outputs/Interpretations for Result Sheet" in Setup in Administrator Menu and then select blood pressure in the sub options, then you can print the blood pressure value on the InBody Result Sheet.

1 Turn off InBody970.

* When InBody970 is already turned on, the blood pressure monitor might not properly connect.

2 Connect the serial cable supplied with the blood pressure monitor to the Blood Pressure Monitor 9-pin serial terminal on the rear of InBody970. Connect the other end of the cable to the serial terminal of the blood pressure monitor.



3 Turn on the blood pressure monitor.

4 Turn on InBody970. When the blood pressure monitor is connected, () icon will be displayed in the upper left of the test standby screen.

4) Barcode Reader

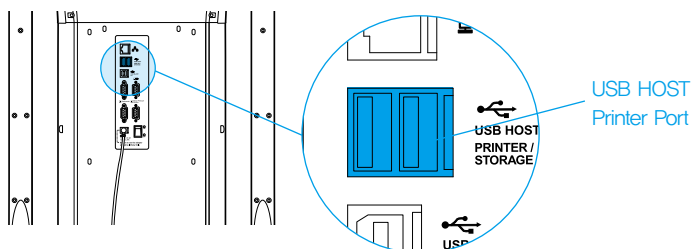
The ID will be inputted automatically if a barcode reader is connected to the InBody970.

* If barcode reader is not recognized, please contact InBody Customer Service.

1 Turn off InBody970.

* When InBody970 is already turned on, the barcode reader might not properly connect.

2 Connect the USB cable of the barcode reader to the USB HOST port on the rear of the InBody970.



3 Turn on InBody970. When the barcode reader is connected, () icon will be displayed in the upper left of the test standby screen.

5) LookinBody

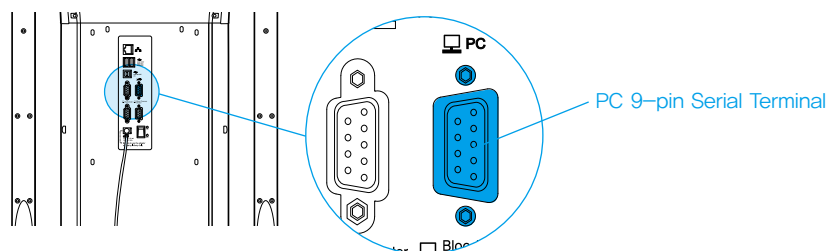
By connecting LookinBody to InBody970, you can manage your InBody data.

* If LookinBody is not recognized, please contact InBody Customer Service.

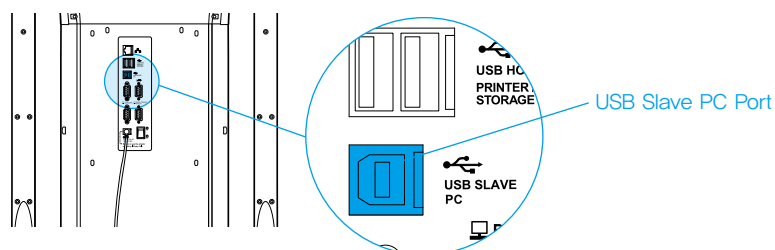
1 Turn off InBody970.

* When InBody970 is already turned on, LookinBody might not properly connect.

2 If the PC has a serial port, connect the serial cable provided with LookinBody to the PC 9-pin serial terminal on the rear of the InBody970, and connect the other end of the serial cable to your PC.



If there is no serial port on your PC, you can connect a normal USB-AB type cable to the USB SLAVE port on the rear of InBody970 instead, and connect the other end of the USB cable to the USB port of the PC.



3 Turn on InBody970. Then launch LookinBody installed on your PC and follow its instructions to connect to InBody970.

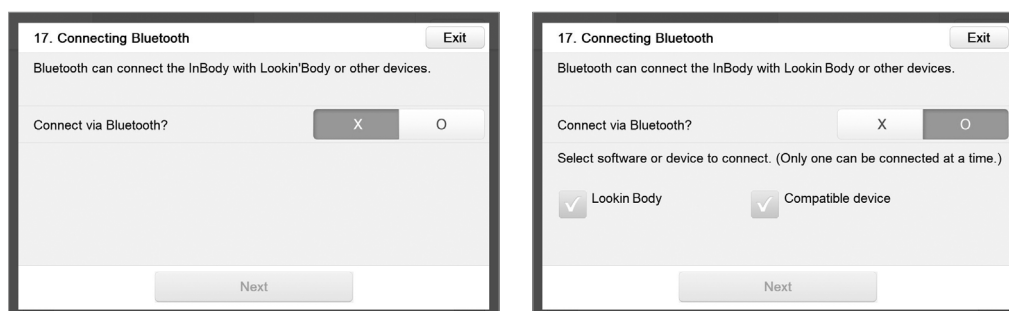
! Caution

- When you are connecting the cable to the device, be careful not to move or pull the device. It may cause a weight measurement error.
- Avoid laying cables connecting to compatible devices where people frequently pass. This may cause individuals to trip over or become injured.
- Do not connect compatible devices that are not specified from InBody to the InBody970. Otherwise, it may cause malfunction.

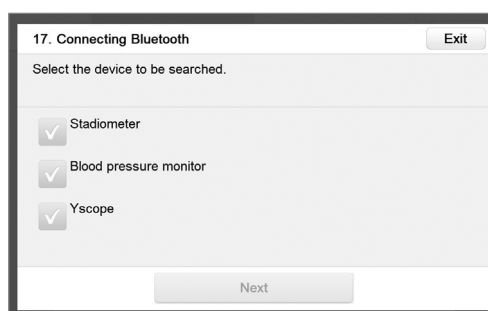
2. Connecting Bluetooth

- 1) Press the [Administrator Menu] on the test standby screen.
- 2) Enter the password to enter the Administrator Menu.
- 3) Go to the "17. Connecting Bluetooth" in Setup.
- 4) If "O" is selected on "Connect via Bluetooth?", you can select "LookinBody" or "Compatible device". Then, please select the "Compatible device" for device connection..

* While InBody970 and LookinBody120 are already connected via Bluetooth, and if you are trying to connect other compatible devices via Bluetooth, the original connect between InBody970 and LookinBody120 will stop.

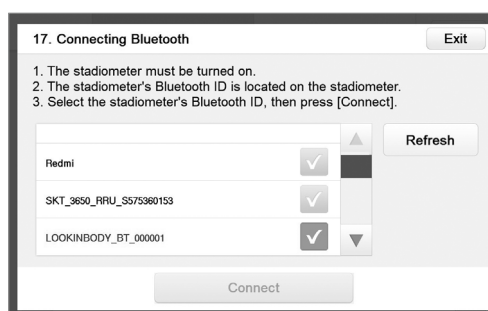


- 5) Turn on one of the InBody recommended compatible device and check the product name and serial number on the name plate attached to the compatible device.
- 6) Choose the compatible device to be connected and then press [Next]

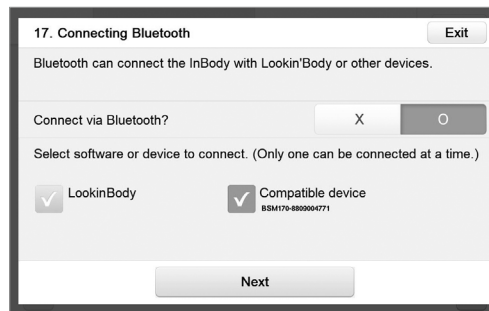


- 7) The compatible device's Bluetooth ID consists of "Product Name-Serial Number", and select the Bluetooth ID of the device to be paired and press [Connect]

* If the Bluetooth ID does not appear or the connection is not good, please contact InBody Customer Service.

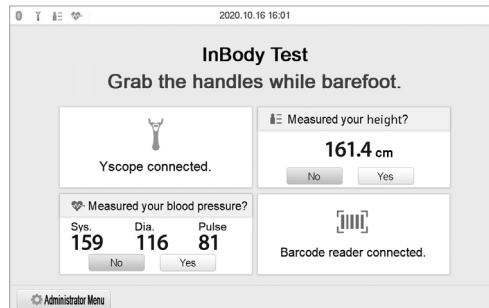


8) If the compatible device is paired properly, the Bluetooth ID of the device connected to the InBody970 will appear as shown below.



9) Press [Exit] to return to the test standby screen, and the Bluetooth icon  and the corresponding device icon will be displayed on the upper left corner screen.

* The screen below shows that InBody970 was connected with Yscope, stadiometer, blood pressure monitor, and barcode reader (USB).



3. Connecting Internet

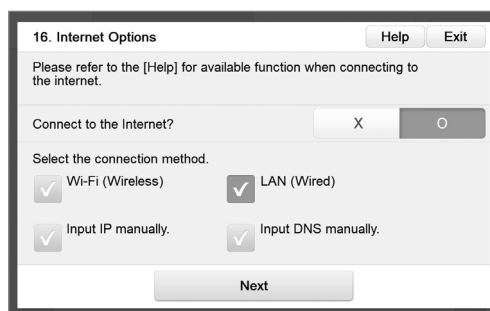
Once InBody970 is connected to the Internet, you can use it to connect the Cloud Services or LookinBody Web

* If the Cloud Service does not work or if LookinBody Web is not recognized, please contact InBody Customer Service.

1) Connecting LAN

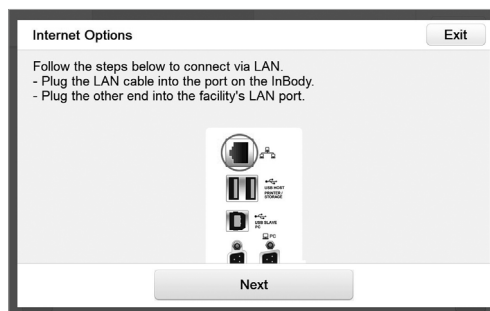
- ❶ Press the [Administrator Menu] on the test standby screen.
- ❷ Enter the password to enter the Administrator Menu.
- ❸ Go to "16. Internet Options" in Setup.
- ❹ Press LAN and then press [Next]

* You may need to enter the IP address or DNS address manually depending on the service area. In this case, press the corresponding button to use.

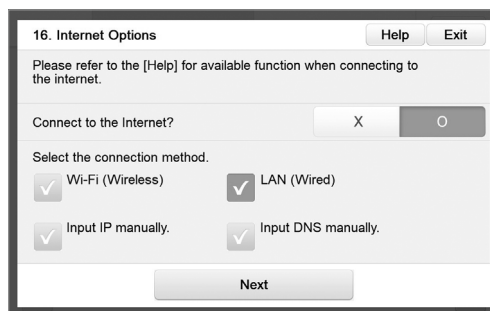


- ❺ Connect the LAN cable to () shape port on the rear of InBody970.

* LAN cable should be connected to a device terminal with internet service or to a connector on the wall.



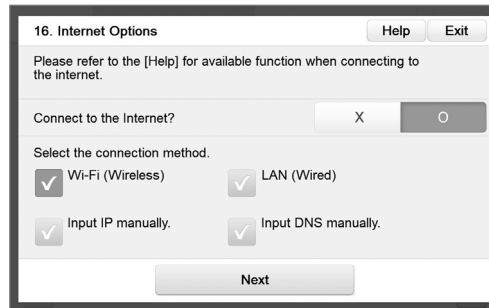
- ❻ You can connect to LookinBody Web or use the Cloud Service through LAN after completing internet connection.



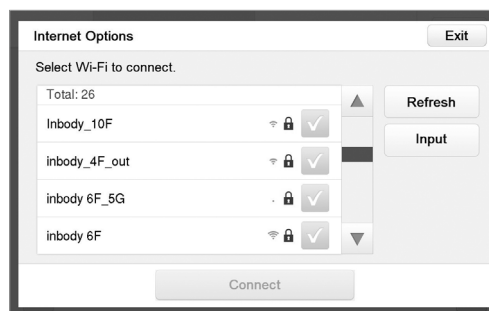
2) Connecting Wi-Fi

- 1 Press the [Administrator Menu] on the test standby screen.
- 2 Enter the password to enter the Administrator Menu.
- 3 Go to "16. Internet Options" in Setup.
- 4 Press Wi-Fi and press [Next]

* Depending on the service area, you may need to enter the IP address or DNS address manually.



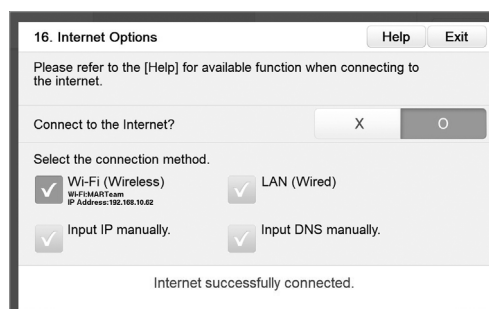
- 5 Select the Wi-Fi to be connected.



- 6 Enter the Wi-Fi password if needed.



- 7 You can connect to LookinBody Web or can use the Cloud Service through Wi-Fi after completing internet connection.



F. Precautions for Maintenance



Caution

- Do not place any objects on the footplate.
- Do not let children jump on the footplate as they might fall and get injured.
- Do not apply excessive force on the device.
- Be careful not to get your fingers caught in the shoulder joint when moving the handle.
- Be careful not to get foreign materials on the bottom of the device. It may cause weight measurement errors.
- Be careful not to get injured by getting your feet caught in the bottom of the device.
- Turn off the device if you are not using it for a day or longer.
- Do not allow any liquid substances to contact the device directly. Keep food and drinks away from the device.
Substances getting inside the device can cause critical damage to the electronic components.
- Clean the exterior of the device gently with a lint-free cloth once a week. Be especially careful not to scratch the LCD screen while cleaning the device.

II. InBody Test

A. Precautions for Measurement

Warning

- Individuals with medical implant devices such as pacemakers, or essential support devices such as patient monitoring systems, must not use this device. Safe, micro alternative currents will flow through the body during the test, but this may cause malfunctioning of the device or endanger lives.
- Children or people with restricted mobility should be tested with the help of an instructor or assistant.
- Do not jump on the footplate. This may cause a serious injury.
- If you have an infectious disease or an open cut, do not touch or use the device.
- The Bioelectrical Impedance Analysis (BIA) method does not harm the human body because it uses micro alternative currents. However, if you are pregnant, please consult your doctor or specialist.

Caution

- Test after using the bathroom. Food in your stomach affects your weight and is considered part of the body composition, which may affect your results.
- Test before exercising. Even light exercise can temporarily change body composition.
- Avoid using the sauna or bath before measuring.
- Make sure that no conductive objects such as steel structures touch your body while measuring.
- Measure at room temperature (20°C -25°C). The human body remains stable at room temperature, but the body composition may change temporarily in cold or hot conditions.
- Test in the morning if possible. In the afternoon, body water tends to be driven to your lower body, which can affect your test results.
- If your palms and soles of feet are dry or if you have a lot of dead skin cells, the test may not work well due to poor electrical contact between the electrode and the body.

Wipe your palms and soles of feet with an InBody Tissue (wet tissue) before measuring.

B. Test Instructions

1. Step up onto the footplate with bare feet.

* The screen changes during the test depending on the setting in "02. Self-Mode or Professional Mode" in the Administrator Menu.
Professional Mode: The screen is configured for testing with an instructor.
(Measurement information is managed by user ID.)

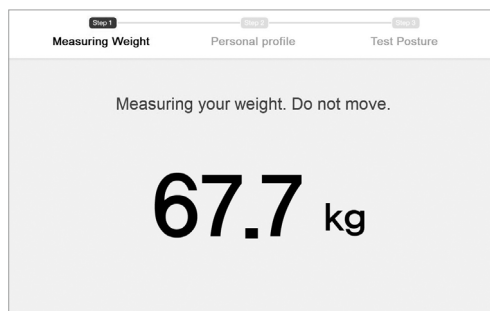
Self Mode: The screen is configured for testing alone.

(Measurement information is managed by phone number.)



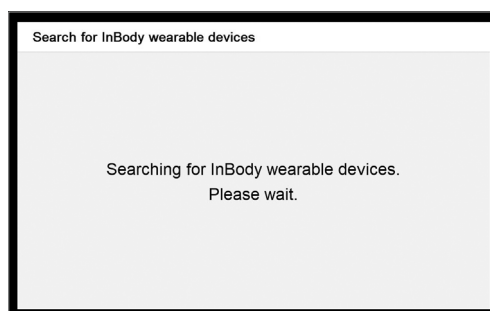
2. InBody970 starts weight measurement.

* Please make sure that the subject stands alone on the device. It may affect the weight measurement when other people lean or touch the InBody970.

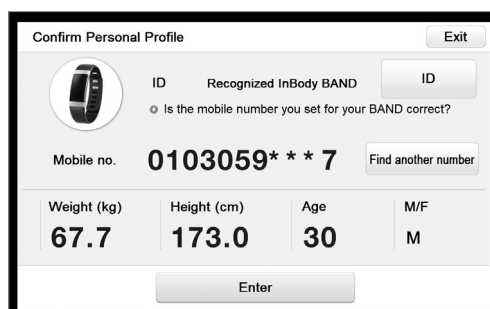


3. Connecting InBodyBAND.

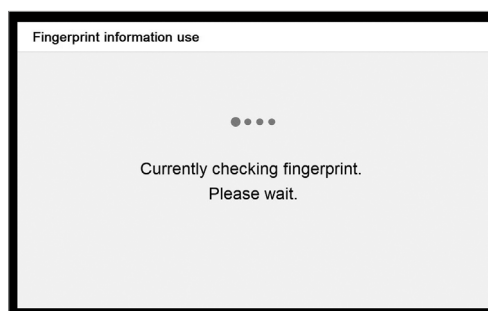
* If InBodyBAND is connected with iOS, turn off the Bluetooth setting and use it.
* The InBodyBAND firmware version must be "V038N" or later and include "N" at the end of the version name in order to support the interconnection function.
(To check the version of InBodyBAND, select "More" and then select "Preferences" - "Product Settings" in the mobile app.)
* If InBodyBAND is worn but not recognized, please refer to "Regarding the Device" in "FAQ".



4. Personal information is received from the InBodyBAND and displayed on the screen automatically. The last three digits of the mobile number are censored with *.



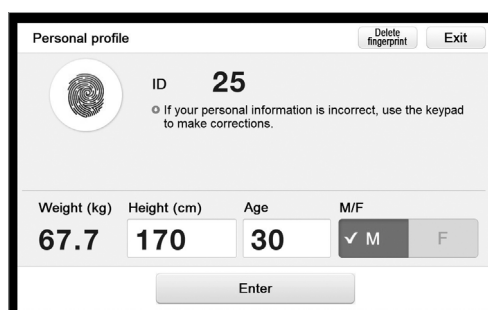
5. When pressing [Exit] or if InBody BAND is not recognized, the InBody970 checks your fingerprint.



6. If your fingerprint is recognized, the personal information will be automatically displayed on the screen as shown below.

*If fingerprint is placed differently from when it was initially registered, personal information may not load properly.

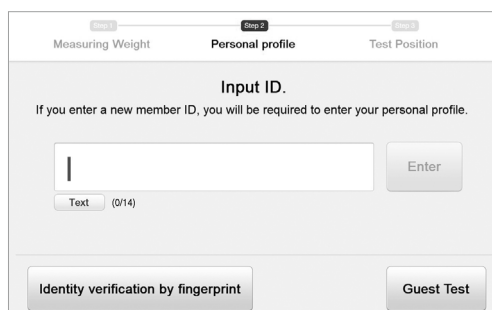
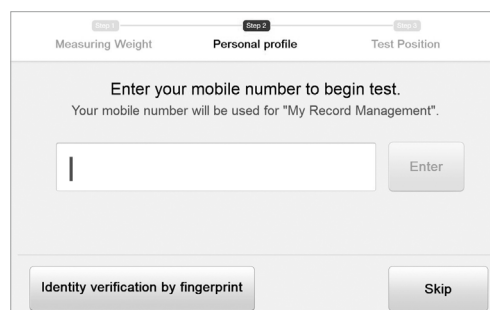
For details, please refer to "Regarding the Device" in "FAQ".

A screen titled "Personal profile" with a "Delete fingerprint" button and an "Exit" button. It shows a fingerprint icon, ID "25", and a note: "If your personal information is incorrect, use the keypad to make corrections." Below are fields for Weight (kg) "67.7", Height (cm) "170", Age "30", and M/F selection (M is selected). An "Enter" button is at the bottom.

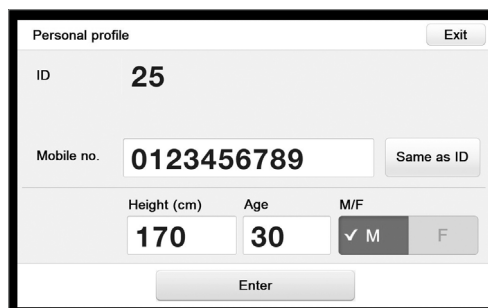
7. If you press [Exit] on the fingerprint identification screen, you may enter your customer information (ID or mobile number).

* For Professional Mode, enter your ID.

* For Self Mode, enter your mobile number.

A screen titled "Input ID." with tabs "Measuring Weight", "Personal profile", and "Test Position". It says "If you enter a new member ID, you will be required to enter your personal profile." There is a text input field with a cursor, an "Enter" button, and a "Text (0/14)" label. At the bottom are "Identity verification by fingerprint" and "Guest Test" buttons.A screen titled "Enter your mobile number to begin test." with tabs "Measuring Weight", "Personal profile", and "Test Position". It says "Your mobile number will be used for 'My Record Management'." There is a text input field with a cursor, an "Enter" button, and a "Skip" button at the bottom.

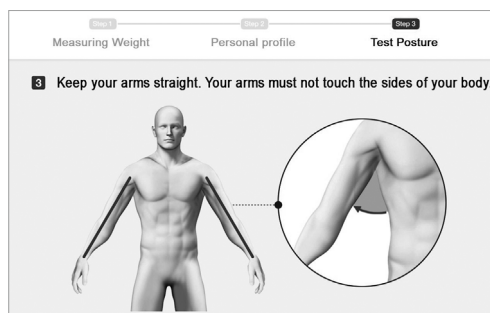
8. If you do not want to enter your ID or mobile number, you can press [Guest Test] or [Skip] and enter only your height, age, and gender to perform the test.

A screen titled "Personal profile" with an "Exit" button. It shows ID "25", Mobile no. "0123456789" with a "Same as ID" button, Height (cm) "170", Age "30", and M/F selection (M is selected). An "Enter" button is at the bottom.

9. Maintain proper posture to take the test.

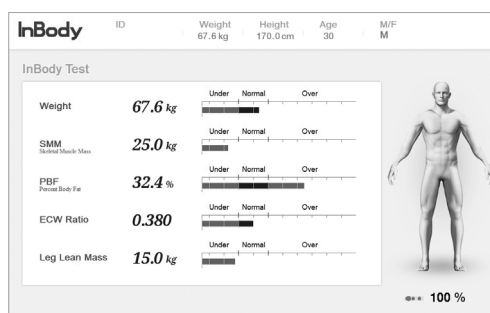
* For proper test posture, refer to "C.Test Posture".

* When the hand and foot electrode is recognized, the InBody Test begins automatically.



10. InBody Test begins.

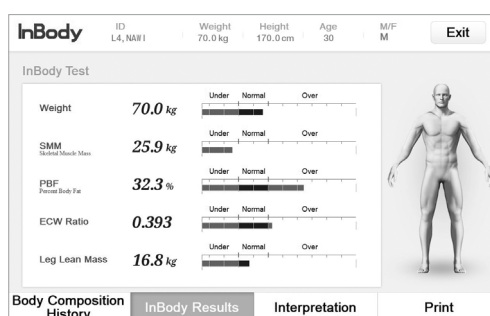
*It will take 90 seconds to complete the test.



11. The result screen is displayed after completing the test.

If a printer is connected to InBody970, you can check the result according to the selected type of Result Sheet.

* Please refer to the Setup in Administrator Menu for details of printer and Result Sheet setting.

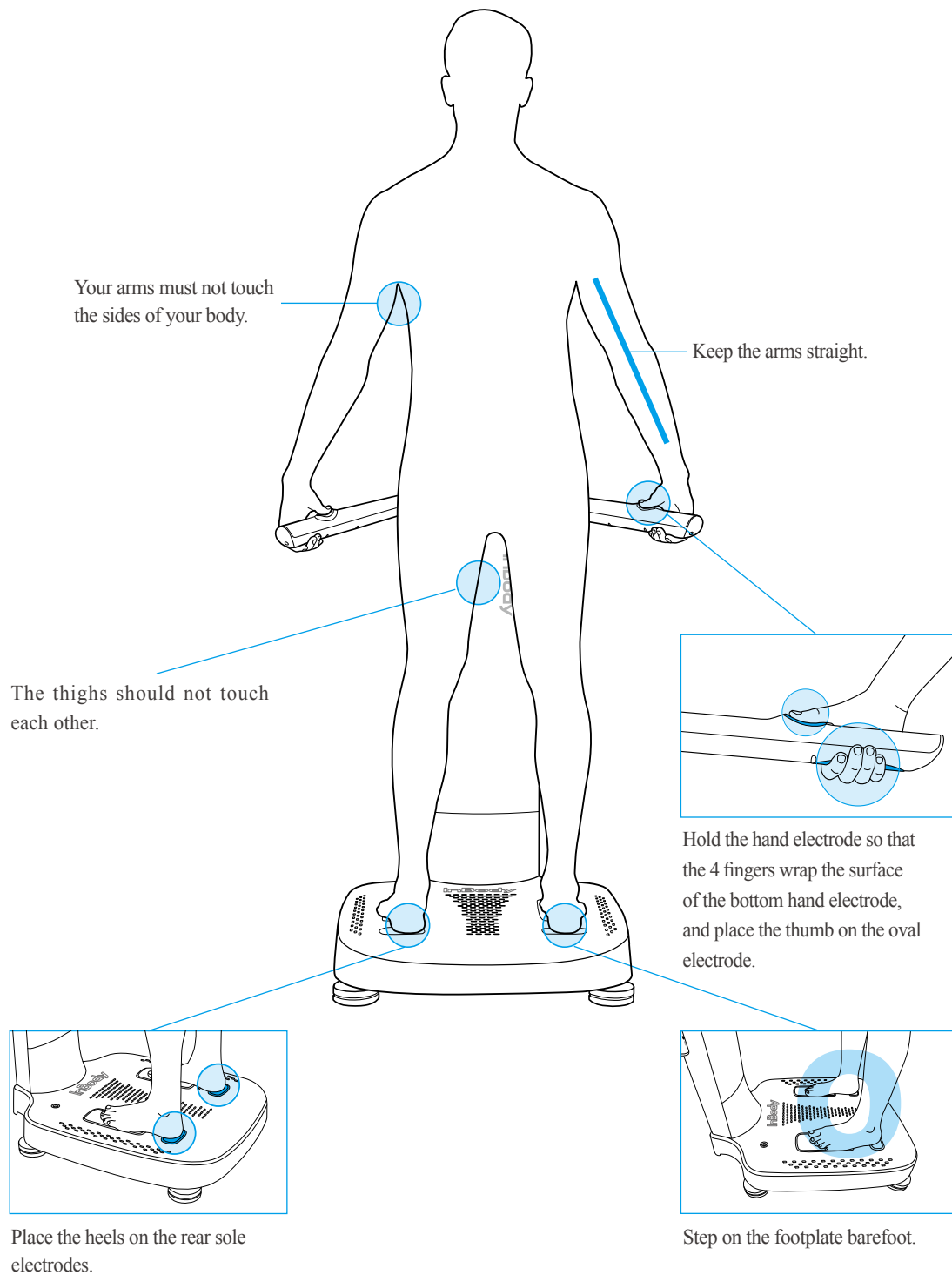


12. Press [Exit] to end the measurement.



C. Test Posture

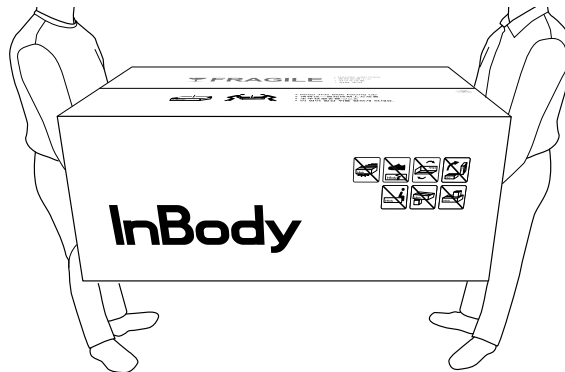
The subject must maintain proper posture to have accurate test results.



III. Transportation and Storage

A. Cautions during Transportation

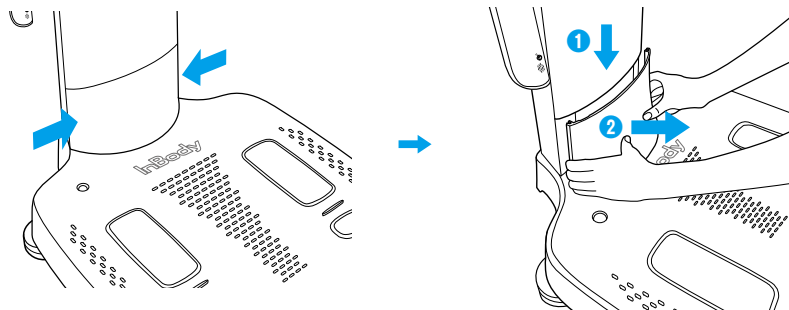
To transport the InBody970 safely, two people should keep the device in a horizontal position.



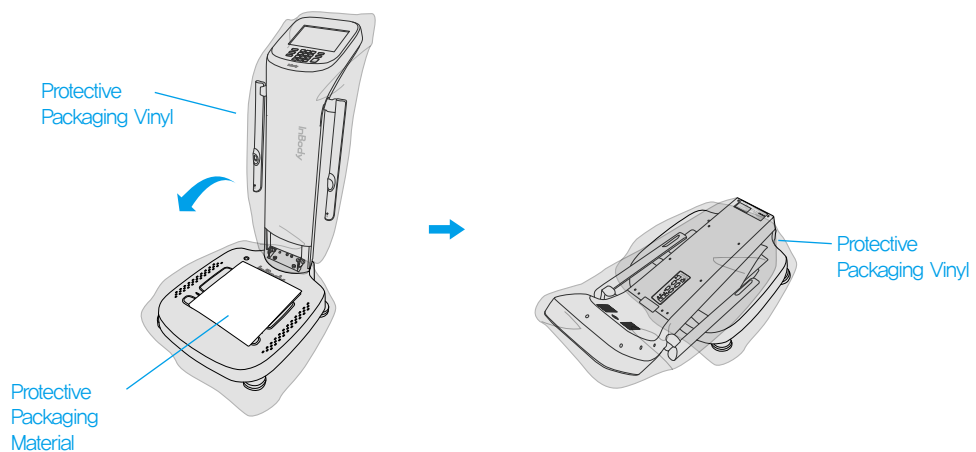
B. Repacking Instructions

Once the InBody970 is installed, avoid transporting the device. If it must be transported, repack it in the following sequence.

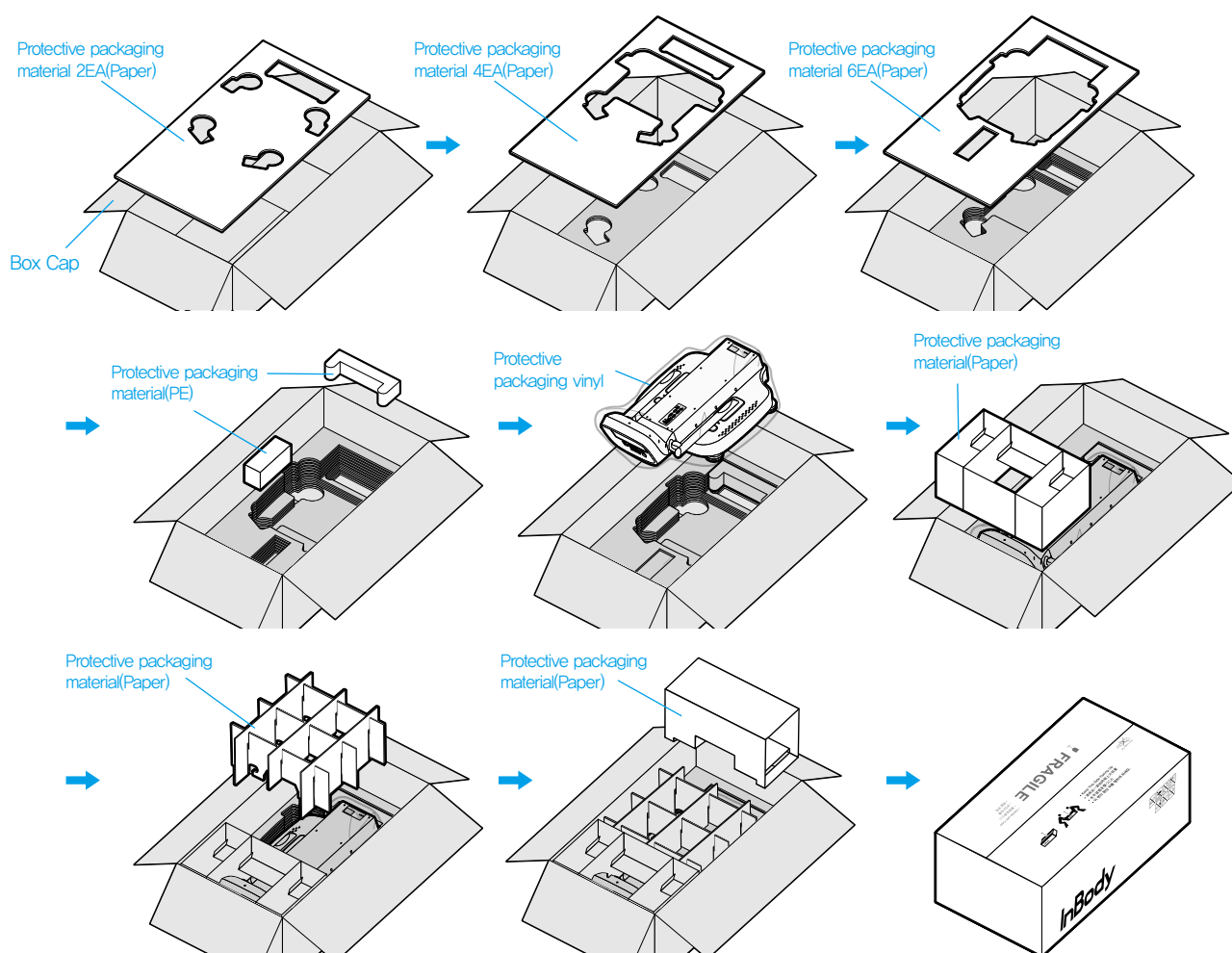
1. Turn off InBody970.
2. Remove all connected adapters, cables, and the hinge cover. Press both gaps of the hinge cover, and press it slightly in the vertical direction and pull it in the arrow direction.



3. Wrap the body of the InBody970 with a protective plastic wrap. Place a protective packaging material on the foot electrodes and fold the upper part as shown in the figure below.



4. Place the InBody970 into the box as shown in the sequence below.



Put the protective packaging material (paper) as shown in the figure and seal it.
After sealing it, transport only by holding the handle.

Caution

- When repacking the device, the protective packaging materials provided by InBody must be used.

C. Transportation and Storage Environment

InBody970 should be transported or stored under the following conditions.

Temperature	-10 ~ 70°C (14 ~ 158°F)
Relative humidity	10 ~ 80% RH (No Condensation)
Atmospheric pressure	50 ~ 106kPa

IV. Frequently Asked Questions (FAQ)

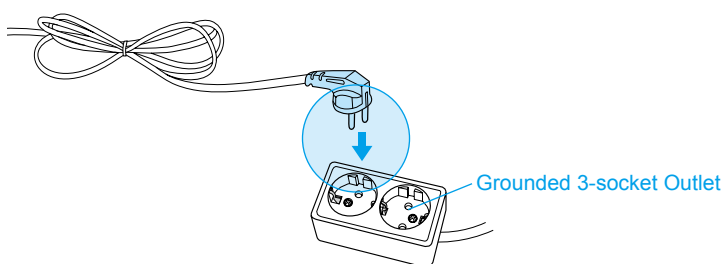
This section includes frequently asked questions and answers for the InBody970. If a problem persists even after checking below, please contact the Customer Service. For contact information, please check "01. Customer Service Information" at "FAQ" in the Administrator Menu of the InBody970.

A. Regarding the Device

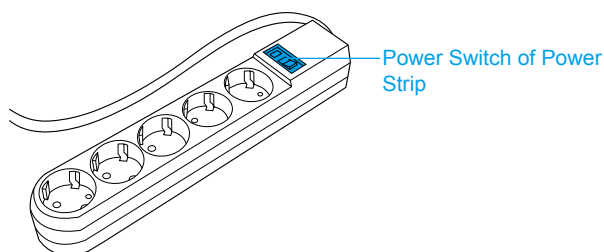
If a problem arises with the InBody970, you may first attempt to check the 'FAQ' in the Administrator Menu. The InBody970 can help you diagnose and solve some problems. If your problem cannot be resolved through the 'FAQ', please refer to the possible solutions below.

Question	Answer
----------	--------

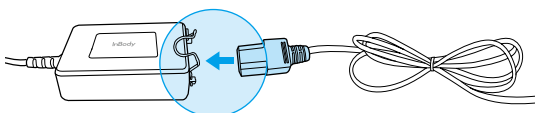
- Power does not turn on.
- Insert the power plug completely into a grounded 3-socket outlet.



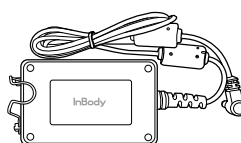
- When using a power strip, the power will not turn on when the power switch of the power strip is turned off. Check the power strip with the power cable connected.



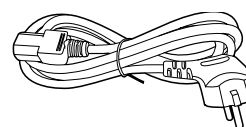
- The problem may occur if the power cord is not completely plugged into the adapter. Insert the power cord completely into the adapter.



- The problem may occur if you are using the power adapter that is not provided by InBody. Always connect a power adapter (DC 12V, 3.4A/3.34A) provided by InBody.



Power Adapter



Power Cable

Question	Answer
<ul style="list-style-type: none"> • The touch screen does not work well. 	<ul style="list-style-type: none"> • Calibrate the touchscreen under Settings of the Administrator Menu '23. Touchscreen Alignment'. * Press firmly to optimize touchscreen response.
<ul style="list-style-type: none"> • How to connect with the compatible devices. 	<ul style="list-style-type: none"> • Please refer to "E. Connecting Compatible Devices" in "I. InBody Installation" in this User's Manual.
<ul style="list-style-type: none"> • InBody BAND is not recognized. 	<ul style="list-style-type: none"> • Check whether other people's InBody BAND are near the hand electrodes. • If there are too many Bluetooth devices around, the connection may delay. • If InBody BAND is not properly connected, turn off or deactivate unused Bluetooth devices to improve the recognition rate.
<ul style="list-style-type: none"> • Fingerprint recognition does not work well. 	<ul style="list-style-type: none"> • Fingerprint recognition may not work well if the subjects' finger prints are worn out due to their working conditions/environment. • If the fingerprint is not recognized well, place the fingerprint to the same location that was originally registered, or update the fingerprint information with new one.

B. Regarding the InBody Test

The question and answers regarding the InBody970 Test are as follows.

Question	Answer
• Do I have to remove my socks or stockings?	• If the test is carried out while wearing socks or stockings, the current will not flow smoothly, and the test may not be performed correctly. The skin must be in direct contact with the electrode for testing.
• Is it OK to test, wearing accessories or metallic materials?	• If accessories or metallic objects do not touch the electrodes, they will not have a significant effect on the test result. However, it is not recommended to wear it for accurate test results.
• Is there any case where I must not take the InBody Test?	• A person who is equipped with a medical device that is essential for life support, such as pacemakers or patient monitoring devices, must not take the InBody Test. Electronic medical devices may malfunction due to the current flowing through the human body during the test.
• Can a person with metal implants in the body take the InBody Test?	• A person who has a metallic material inserted in the body may have different conductivity that may affect the results of the test.
• I have limited mobility and cannot maintain proper posture for the InBody Test. How can I still be tested?	• The test is available, but the test result may be inaccurate due to poor contacting to the electrode surface. InBody has a line of products that conduct body composition analysis in lying posture that allow the patients to stay in bed. For more information, please contact InBody.
• Is the current flowing in the test harmless to the human body?	• The InBody does not harm the human body because it uses micro alternative electric current. The safety of the InBody has been proven and is being used by many medical institutions because the InBody has already obtained the national and European medical certificate.
• How often should I take the InBody Test?	• Testing every other week or once a month can effectively track InBody Test results for exercise prescriptions, hormonal prescriptions, obesity, and rehabilitation. • It's good to check up often, but it's also important to keep track of your body's changes over time through steady tests. • Body composition changes can be seen on the InBody result screen and the InBody Result Sheet. • It's good to check up often, but it's also important to keep track of your body composition changes over time.
• What are the precautionary steps to ensure accuracy of the InBody Test?	• Please refer to 'A. Precautions for Measurement' in section 'II. InBody Test' in this User's Manual.

V. Others

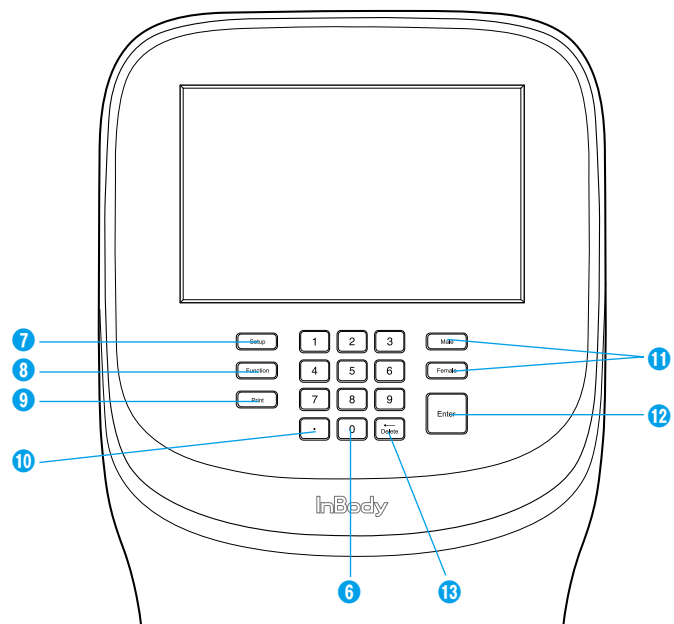
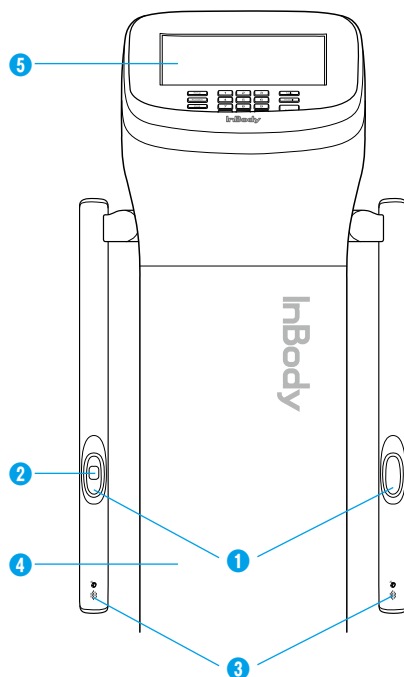
A. Exterior and Functions

The names and functions of each part of the InBody970 are as followings.

* Please check each component for damage prior to installation.

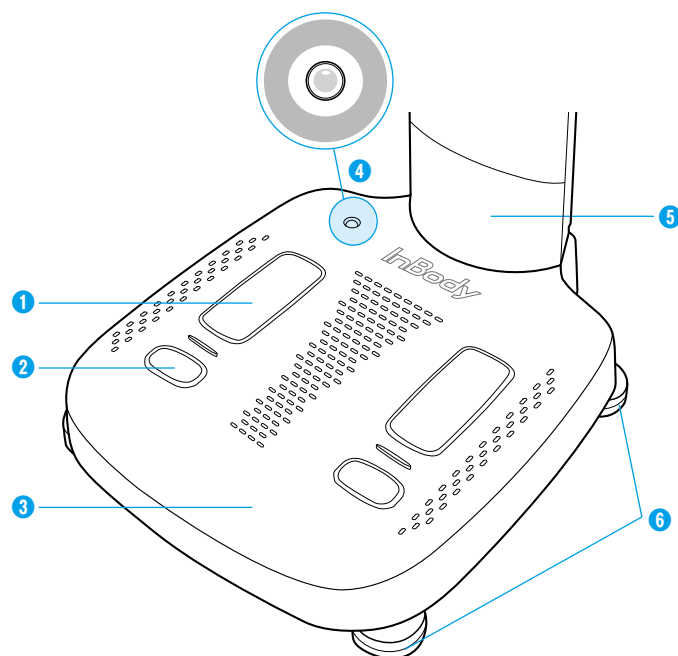
1. Upper Section

- ❶ Hand Electrode: For testing, all four fingers must wrap around the hand electrode to contact the surface, and the thumb touches the thumb electrode.
- ❷ Fingerprint Recognition Sensor: The sensor recognizes the left thumb fingerprint and saves or loads the personal information automatically.
- ❸ InBody BAND Recognition Sensor: Receives personal information in wireless connection with InBody BAND.
- ❹ Body: Connects the upper section and the lower section.
- ❺ Display: It displays each step of test, guide, and test result. It enables to enter the data required for the test, set the test environment, and check the test results by touching the screen.
- ❻ Number Button: Enter numeric data such as age and height.
- ❼ Setup Button: Enter the "Setup" in Administrator Menu from the test standby screen.
- ❽ Function Button: Enter the "FAQ" screen directly from the test standby screen.
- ❾ Print Button: Reprint test results.
- ❿ Decimal Point Button: Enter the decimal point in ID, height, age and weight.
- ⓫ Gender Button: Select the gender. (Male:Man, Female:Woman)
- ⓬ Enter Button: Used when input is completed or changes are saved in the Administrator Menu.
- ⓭ Delete Button: Used to delete the saved data.



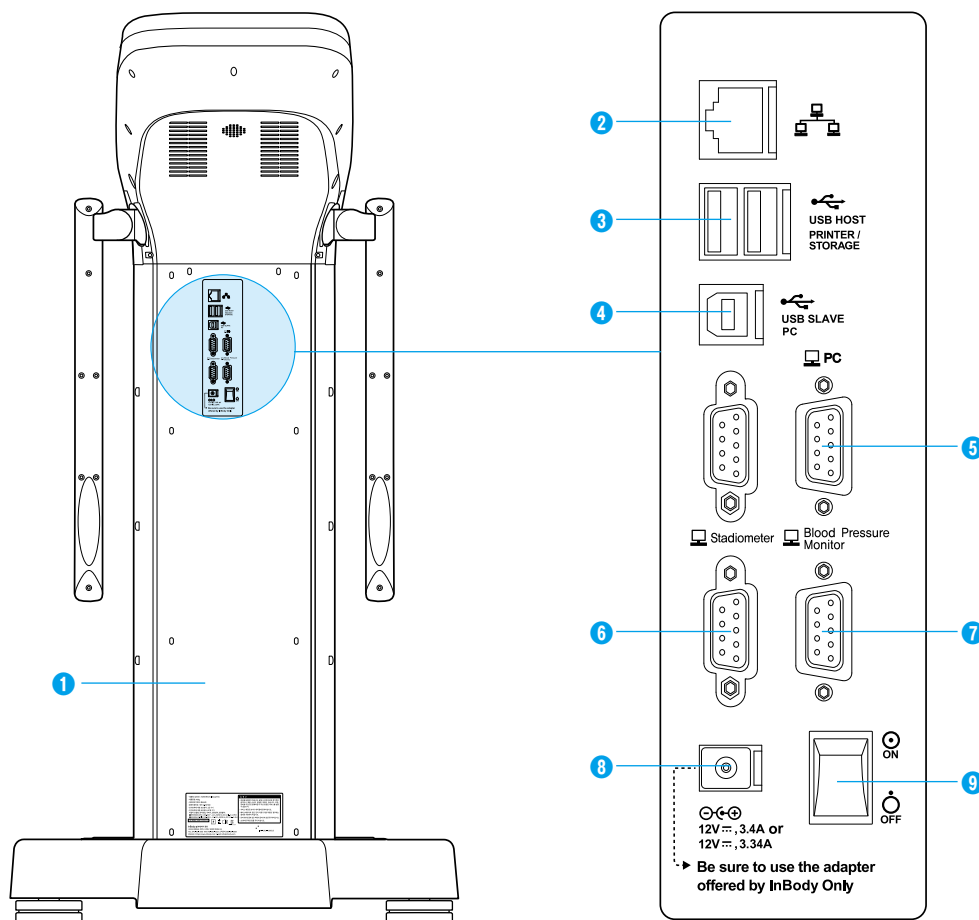
2. Footplate

- ❶ Front Sole Electrode Area: This area is the electric contacting area where user's front foot treads to contact during the test.
- ❷ Rear Sole Electrode Area: This area is the electric contacting area where user's heel treads to contact during the test.
- ❸ Footplate: Connected to loadcells that measures user's weight.
- ❹ Level Indicator: Shows the level status of InBody970.
- ❺ Hinge Cover: Used to cover the connecting part of the upper section and lower section.
- ❻ Level Supporter: Can fit the level by adjusting height.




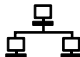

3. Rear view

- ❶ Rear Cover: Used for inspecting internal inspections, etc. Verified InBody service engineer can only open it.
- ❷ LAN Port (10/100T-Base): Connect the InBody970 to the Internet or LookinBody120 installed on the PC via wire connection.
 - * You can connect the InBody970 to LookinBody120 installed on the PC if at least one of ❷, ❹, ❺ ports is connected.
- ❸ USB HOST Port: Connect printer, USB thumb drive and barcode reader.
- ❹ USB SLAVE Port: Connect the InBody970 to LookinBody120 installed on PC.
 - * You can connect the InBody970 to LookinBody120 installed on the PC if at least one of ❷, ❹, ❺ ports is connected.
- ❺ PC 9-pin Serial Terminal (Female, RS-232C): Can be used to connect the InBody970 with LookinBody120 installed on the PC.
 - * You can connect the InBody970 to LookinBody120 installed on the PC if at least one of ❷, ❹, ❺ ports is connected.
- ❻ Stadiometer 9-pin Serial Terminal (Female, RS-232C): Connect the InBody970 with a stadiometer.
 - * Make sure to connect only InBody stadiometer.
- ❼ Blood Pressure Monitor 9-pin Serial Terminal (Female, RS-232C): Connect the InBody970 with a blood pressure monitor.
 - * Make sure to connect only InBody Blood Pressure Monitor.
- ❽ Power Jack: Connect a power adapter.
- * Use the adapter provided by only InBody.
- ❾ Power Switch: Turn the device on and off.




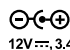




B. Safety Information





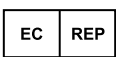

Indicators

	9-pin serial terminal (Female, RS-232C)
	LAN port (10T Base)
	USB port

Safety Symbols

	High Voltage
	Warning, Caution
	BF Type Equipment
 12V $\overline{\text{---}}$, 3.4A/3.34A	Adapter
	Power On
	Power Off

Etc. Symbols

	European Conformity		Serial Number
	Manufacturer		Alternating Current
	Authorized representative in the EUROPEAN COMMUNITY		Operating Instructions

Permission



Identification code: R-R-BIB-InBody970
Product Name: Impedance Body Fat Analyzer
Model name: InBody970

Company name: InBody Co., Ltd.
Manufacturer / Country of manufacturer: InBody Co., Ltd. / Korea
Date of Manufacture: Rear side

Caution

- This device is a Class IIa electromagnetic wave compatible device and can be used in all areas.
- There is a possibility of radio interference during operation of the radio equipment; and may not be used in areas where safety is of concern.
- Bluetooth uses the same frequency band as many electronic devices, which can cause radio interference between the devices.
- The user should be responsible for illegal use or data transmission problem caused by using Bluetooth.

C. Classifications

Classifications	Body Composition Analyzer of Direct Segmental Multi-frequency Bioelectrical Impedance Analysis Method	
	Type of protection against electric shock	Class I
	Type of the applied parts	BF Type
	EMC Immunity / EMC Emission	Level A, CLASS A
	Degree of protection against water infiltration	IPX0

D. Specifications

Bioelectrical Impedance Analysis (BIA) Measurement Item	Bioelectrical Impedance (Z)	40 Impedance Measurements by Using 8 Different Frequencies (1kHz, 5kHz, 50kHz, 250kHz, 500kHz, 1MHz, 2MHz, 3MHz) at Each of 5 Segments (Right Arm, Left Arm, Trunk, Right Leg and Left Leg)
	Phase Angle	15 Phase Angle Measurements by Using 3 Different Frequencies (5kHz, 50kHz, 250kHz) at Each of 5 Segments (Right Arm, Left Arm, Trunk, Right Leg, and Left Leg)
Electrode Method	Tetrapolar 8-Point Tactile Electrodes	
Measurement Method	Direct Segmental Multi-Frequency Bioelectrical Impedance Analysis (DSM-BIA) Simultaneous Multi-Frequency Bioelectrical Impedance Analysis (SMF-BIA)	
Body Composition Calculation Method	No Empirical Estimation (Age and Gender does not affect the result)	
Body Composition Result Sheet	<p>Result parameters and Result interpretation</p> <ul style="list-style-type: none"> • Body Composition Analysis (Total Body Water, Protein, Mineral, Body Fat Mass, Weight) • Muscle-Fat Analysis (Weight, Skeletal Muscle Mass, Body Fat Mass) • Obesity Analysis (Body Mass Index, Percent Body Fat) • Segmental Lean Analysis • Segmental Fat Analysis • Segmental ICW Analysis • Segmental ECW Analysis • ECW Ratio Analysis (ECW Ratio) • Segmental ECW Ratio • Body Composition History (Weight, Skeletal Muscle Mass, Percent Body Fat, ECW Ratio) • InBody Score • Visceral Fat Area (Graph) • Weight Control (Target Weight, Weight Control, Fat Control, Muscle Control) • Body Type (Graph) • Nutrition Evaluation (Protein, Minerals, Fat Mass) • Obesity Evaluation (BMI, Percent Body Fat) • Body Balance Evaluation (Upper, Lower, Upper-Lower) • Waist-Hip Ratio (Graph) • Visceral Fat Level (Graph) • Research Parameters (Extracellular Water, Intracellular Water, Skeletal Muscle Mass, Fat Free Mass, Basal Metabolic Rate, Waist-Hip Ratio, Visceral Fat Level, Visceral Fat Area, Obesity Degree, Bone Mineral Content, Body Cell Mass, Arm Circumference, Arm Muscle Circumference, FMI, FFMI, SMI, Recommended Calorie Intake, Calorie Expenditure of Exercise, InBody Score) • Blood Pressure (Max/Min/Pulse Rate, Avg/Pulse pressure/R.P.P) • Result Interpretation QR Code • QR Code • Segmental Body Phase Angle (5kHz, 50kHz, 250kHz: Right Arm, Left Arm, Trunk, Right Leg, Left Leg) • Whole Body Phase Angle (50kHz) • Impedance Graph (Each segment and each frequency) 	

Body Composition Result Sheet for Children	<p>Result parameters and Result interpretation</p> <ul style="list-style-type: none"> • Body Composition Analysis (Total Body Water, Protein, Mineral, Body Fat Mass, Fat Free Mass, Soft Lean Mass, Weight) • Muscle-Fat Analysis (Weight, Skeletal Muscle Mass, Body Fat Mass) • Obesity Analysis (Body Mass Index, Percent Body Fat) • Growth Graph (Height, Weight, BMI) • Growth Score • Body Composition History (Height, Weight, Skeletal Muscle Mass, Percent Body Fat) • Nutrition Evaluation (Protein, Minerals, Fat Mass) • Obesity Evaluation (BMI, Percent Body Fat) • Body Balance (Upper, Lower, Upper-Lower) • Segmental Lean Analysis (Right Arm, Left Arm, Trunk, Right Leg, Left Leg) • Segmental Body Water Analysis (Right Arm, Left Arm, Trunk, Right Leg, Left Leg) • Research Parameters (Intracellular Water, Extracellular Water, Basal Metabolic Rate, Child Obesity Degree, Bone Mineral Content, Body Cell Mass, FFMI, FMI) • Blood Pressure (Max/Min/Pulse Rate, Avg/Pulse pressure/R.P.P) • Result Interpretation QR Code • QR Code • Segmental Body Phase Angle (5kHz, 50kHz, 250kHz: Right Arm, Left Arm, Trunk, Right Leg, Left Leg) • Whole Body Phase Angle (50kHz) • Impedance Graph (Each segment and each frequency)
Body Water Result Sheet	<p>Result parameters and Result interpretation</p> <ul style="list-style-type: none"> • Body Water Composition (Total Body Water, Intracellular Water, Extracellular Water) • ECW Ratio Analysis (ECW Ratio) • Segmental Body Water Analysis (Right Arm, Left Arm, Trunk, Right Leg, Left Leg) • Body Composition Analysis (Protein, Minerals, Body Fat Mass, Fat Free Mass, Bone Mineral Content) • Segmental ECW Analysis (Right Arm, Left Arm, Trunk, Right Leg, Left Leg) • Body Water Composition History (Weight, Total Body, Intracellular Water, Extracellular Water, Extracellular Water Ratio) • Muscle-Fat Analysis (Weight, Skeletal Muscle Mass, Soft Lean Mass, Body Fat Mass) • Obesity Evaluation (BMI, Percent Body Fat) • Research Parameters (Fat Free Mass, Basal Metabolic Rate, Waist-Hip Ratio, Visceral Fat Area, Obesity Degree, Body Cell Mass, Arm Circumference, Arm Muscle Circumference, TBW/FFM, FMI, FFMI, SMI) • Blood Pressure (Max/Min/Pulse Rate, Avg/Pulse pressure/R.P.P) • Result Interpretation QR Code • QR Code • Segmental Body Phase Angle (5kHz, 50kHz, 250kHz: Right Arm, Left Arm, Trunk, Right Leg, Left Leg) • Whole Body Phase Angle (50kHz) • Impedance Graph (Each segment and each frequency)
Research Result Sheet	<ul style="list-style-type: none"> • Body Composition Summary (Fat Free Mass, Body Fat Mass, Intracellular Water, Extracellular Water, Body Water, ECW Ratio, Weight) • Body Composition Analysis (Lean Mass, ICW, ECW, Fat Mass, ECW/TBW): Whole Body, Right Arm, Left Arm, Trunk, Right Leg, Left Leg • Research Parameters (BMI, Percent Body Fat, Percent Abdominal Fat, Visceral Fat Area, Obesity Degree, Waist Circumference, FMI, Skeletal Muscle Mass, FFMI, SMI, Protein, Body Cell Mass, Mineral, Bone Mineral Content, Basal Metabolic Rate, Arm Circumference, Arm Muscle Circumference, TBW/FFM) • Segmental Body Phase Angle (5kHz, 50kHz, 250kHz: Right Arm, Left Arm, Trunk, Right Leg, Left Leg) • Whole Body Phase Angle (50kHz) • Impedance Graph (Each segment and each frequency)

Comparison Result Sheet	<ul style="list-style-type: none"> • Body Composition Summary (Fat Free Mass, Body Fat Mass, Intracellular Water, Extracellular Water, Body Water, ECW Ratio, Weight) • Body Composition Analysis (Lean Mass, ICW, ECW, Fat Mass, ECW/TBW): Whole Body, Right Arm, Left Arm, Trunk, Right Leg, Left Leg • Research Parameters (BMI, Percent Body Fat, Percent Abdominal Fat, Visceral Fat Area, Obesity Degree, Waist Circumference, FMI, Skeletal Muscle Mass, FFMI, SMI, Protein, Body Cell Mass, Mineral, Bone Mineral Content, Basal Metabolic Rate, Arm Circumference, Arm Muscle Circumference, TBW/FFM) • Segmental Body Phase Angle (5kHz, 50kHz, 250kHz: Right Arm, Left Arm, Trunk, Right Leg, Left Leg) • Whole Body Phase Angle (50kHz) • Impedance Graph (Each segment and each frequency)
Evaluation Result Sheet	<ul style="list-style-type: none"> • Whole Body ECW Ratio (ECW/TBW): (T-Score, Z-score) • Visceral Fat Area (VFA,cm²): (T-Score, Z-score) • Body Mass Index (BMI,kg/m²): (T-Score, Z-score) • Bioelectrical Impedance Vector Analysis (BIVA) • Whole Body Phase Angle 50kHz (PhA,°): (T-Score, Z-score) • ECW Ratio (ECW/TBW) Balance (Right Arm, Left Arm, Trunk, Right Leg, Left Leg): Evaluation • Percent Body Fat (PBF,%): (T-Score, Z-score) • Skeletal Muscle mass Index (SMI,m²): (T-Score, Z-score) • Fat Mass Index (FMI,kg/m²): (T-Score, Z-score) • Fat Free Mass Index (FFMI,kg/m²): (T-Score, Z-score) • Lean Mass (LM) Balance(Right Arm, Left Arm, Trunk, Right Leg, Left Leg): Amount, Evaluation • Skeletal Muscle Mass and ECW Ratio (SMM,% & ECW/TBW) • Skeletal Muscle mass Index and ECW Ratio (SMI,kg/m²& ECW/TBW) • Waist Hip Ratio (WHR): (T-Score, Z-score) • Body Cell Mass (BCM,kg): (T-Score, Z-score) • Outer Circumference(cm) • Weight (kg): (T-Score, Z-score) • Skeletal Muscle Mass/WT, • Extracellular Mass/Body Cell Mass (ECM/BCM): (T-Score, Z-Score) • Total Body Water/Weight (%): (T-Score, Z-Score)
Visceral Fat Result Sheet	<ul style="list-style-type: none"> • Skeletal Muscle Mass and ECW Ratio (SMM,% & ECW/TBW) • Skeletal Muscle mass Index and ECW Ratio (SMI,kg/m²& ECW/TBW) • Waist Hip Ratio (WHR): (T-Score, Z-score) • Body Cell Mass (BCM,kg): (T-Score, Z-score) • Outer Circumference(cm) • Weight (kg): (T-Score, Z-score) • Skeletal Muscle Mass/WT, • Extracellular Mass/Body Cell Mass (ECM/BCM):(T-Score, Z-Score) • Total Body Water/Weight (%): (T-Score, Z-Score) • Subcutaneous Fat Area • Visceral Fat Area • Body Fat Change (Weight, Body Fat Mass, Abdominal Fat Mass, Subcutaneous Fat Mass, Visceral Fat Mass) • Research Parameters (Waist Circumference, Obesity Degree, Waist/Height Ratio, Body Adiposity Index, ABSI, Conicity Index, Basal Metabolic Rate, ECW Ratio, SMI, FMI, Lean Mass/Visceral Fat Area) • Impedance Graph (Each segment and each frequency)

* Blood pressure information can only be printed when the blood pressure monitor is connected.

* A complete Visceral Fat Result Sheet will appear only when you connect the Yscope.

E. Functional Specifications

Compatible Device	BSM Series (BSM170B, BSM370, BSM270B), BPBIO Series (BPBIO320, BPBIO750), Yscope, and InBodyBAND Series
Logo Display	Name, Address and Content Information can be shown on the Results Sheet
Digital Results	LCD Screen, LookinBody Web, LookinBody120
Types of Result Sheets	Body Composition Result Sheet, Body Water Result Sheet, Evaluation Result Sheet, Research Result Sheet, Comparison Result Sheet, Body Composition Result Sheet for Children, Visceral Fat Result Sheet
Voice Guidance	Audible guidance for test in progress and test complete
Data Storage	Saves up to 100,000 measurements (When ID is entered)

Administrator Menu	Setup: Configure settings and manage data Troubleshooting: Additional information to help use the InBody970
InBody USB	Copy, backup, or restore the LookinBody test data (data can be viewed on Excel or LookinBody120)
Barcode Reader	Member ID will be automatically inputted when the Barcode is scanned
InBodyBAND Series Recognition Function	Recognizes the InBodyBAND series of the subject and automatically inputs personal information to the InBody970
Fingerprint Recognition Function	Recognizes the fingerprint of the measurer and automatically inputs personal information to the InBody970
Backup data	Backup data saved in InBody970 by using an InBody USB
QR Code	See your result on InBody mobile App

F. Other Specifications

Applied Rating Current	1kHz : 70uA (+-10uA), Over 5kHz : 300uA (+-30uA)		
Adapter	Bridgepower (BPM040S12F07)	Power Input	AC 100-240V, 50/60Hz, 1.2A(1.2A-0.6A)
		Power Output	DC 12V $\overline{\text{---}}$ 3.4A
	Mean Well (GSM40A12)	Power Input	AC 100-240V, 50/60Hz, 1.0-0.5A
		Power Output	DC 12V $\overline{\text{---}}$ 3.34A
Display Type	1280 × 800 10.1 inch Color TFT LCD		
Internal Interface	Touchscreen, Keypad		
External Interface	RS-232C 4EA, USB Host 2EA, USB Slave 1EA, LAN(10/100T) 1EA, Bluetooth 1EA, Wi-Fi 1EA		
Compatible Printer	InBody970 compatible printers available at www.inbodyservice.com		
Dimensions	614.1(W) x 963.8(L) x 1239.3(H): mm		
Equipment Weight	46kg (101.4lb)		
Test Duration	About 90 seconds		
Operation Environment	10 ~ 40°C (50 ~ 104°F), 30 ~ 75% RH, 70~106kPa		
Storage Environment	-10 ~ 70°C (14 ~ 158°F), 10 ~ 80% RH, 50 ~ 106kPa (No Condensation)		
Testing Weight Range	5 ~ 300kg (11.0 ~ 661.4lb)		
Testing Age Range	3+ years		
Height Range	95 ~ 220cm (3ft 1.40in ~ 7ft 2.61in)		

* Specifications are subject to be changed without prior notice.

* This product is a medical device. Please read the WARNINGS and PRECAUTIONS before you use it.

* QR Code is registered trademark of DENSO WAVE INCORPORATED

